

Corporate Organizational Charts

Registration of Provider Organizations

Table of contents is hyperlinked to each entity's Corporate Organizational Chart.

2025-05-22

Contents

Acton Medical Associates	4
Affiliated Pediatric Practices	6
Baystate Health	8
Behavioral Health Network	10
Berkshire Health Systems	12
Beth Israel Lahey Health	14
BMC Health System	17
Cambridge Health Alliance	20
Cape Cod Healthcare	22
Charles River Medical Associates	24
Children's Medical Center Corporation	26
Community Care Cooperative	28
Dana-Farber Cancer Institute	30
East Boston Neighborhood Health Center	32
Emerson Health System	34
Emerson IPA	36

Encompass Health Corporation	38
Hallmark Health IPA	41
Harbor Health Services	43
Heywood Healthcare	45
High Point Treatment Center	47
Highland Healthcare Associates IPA	49
Lawrence General Hospital	51
MACIPA	53
Mass General Brigham	55
Milford Regional Medical Center	58
Monogram Health Professional Services	60
National Mentor LLC	62
New England Orthopedic Surgeons	64
Quest Diagnostics	66
Signature Healthcare Corporation	73
South Shore Health System	75
Southcoast Health System	77
Steward Health Care System	79
Sturdy Memorial Foundation	81
Tenet Healthcare Corporation	83
The Boston Health Care for the Homeless Program	87
Trinity Health Corporation	89
Tufts Medicine	91
UMass Memorial Health Care	94

UnitedHealth Group	98
Universal Health Services	102
Upham’s Corner Health Committee	104
Valley Health Systems	106
Valley Medical Group	108

Acton Medical Associates



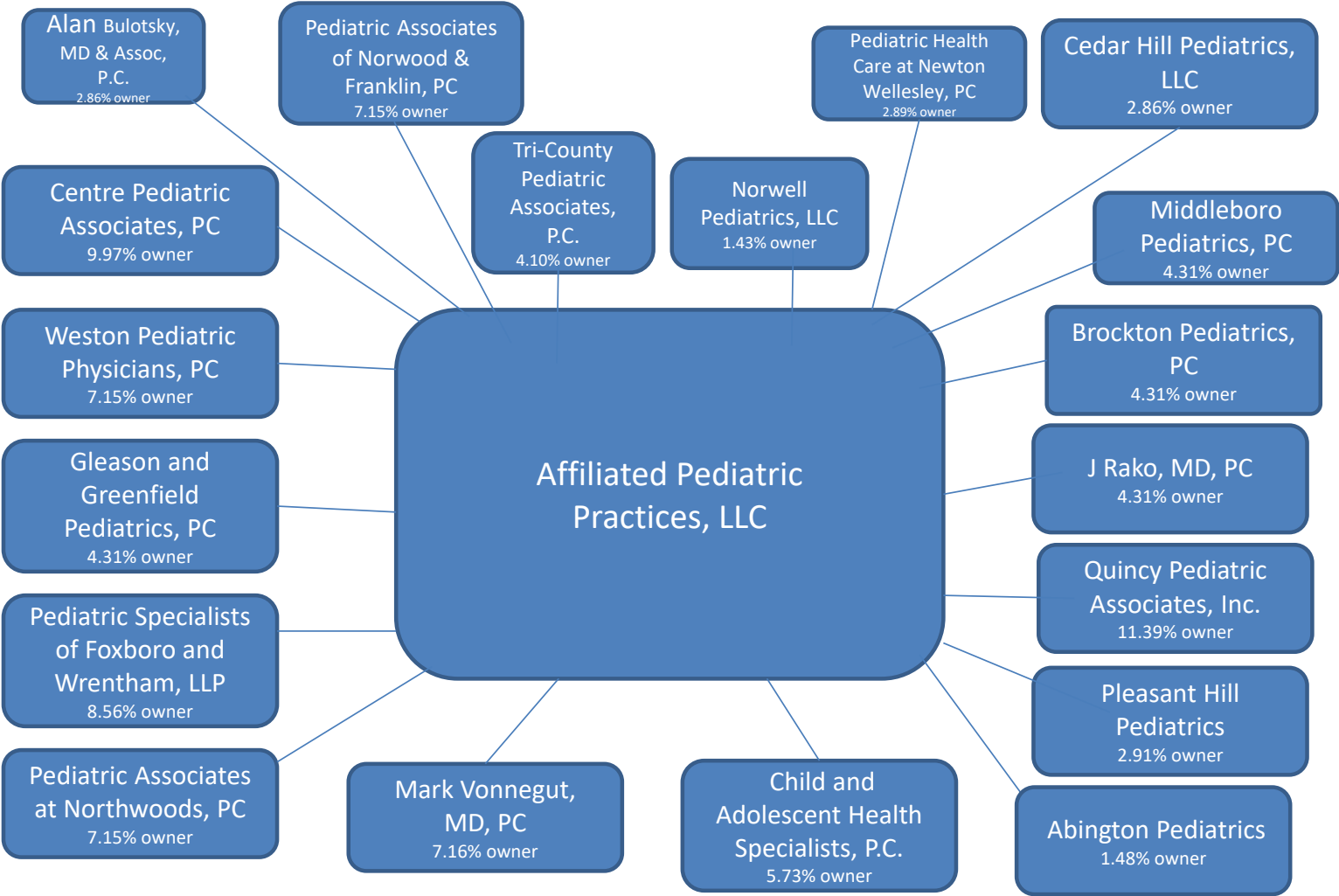
Acton Medical Associates, PC *

* Denotes Clinical Entity

Affiliated Pediatric Practices

CORPORATE ORGANIZATIONAL CHART

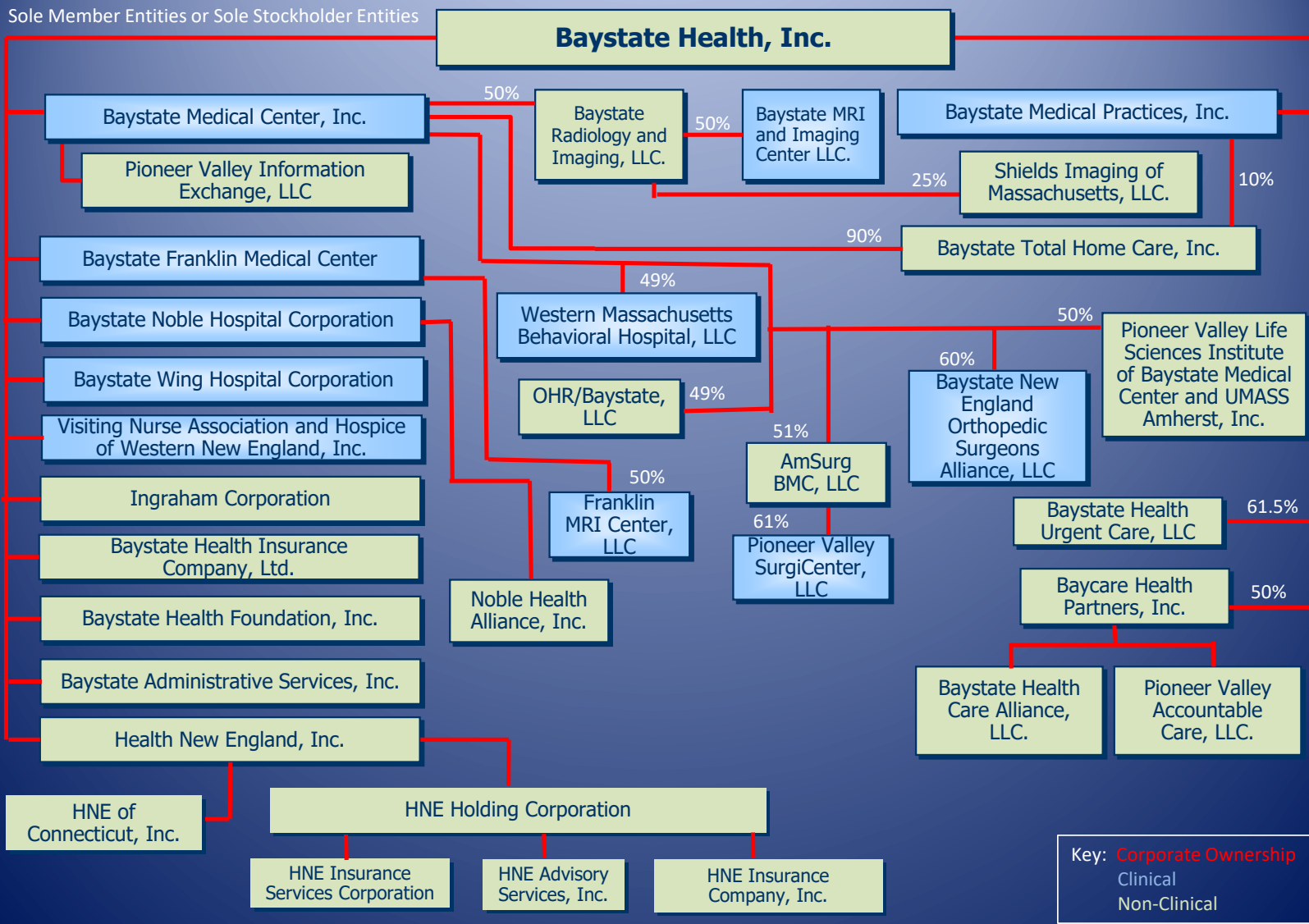
**Affiliated Pediatric Practices, L.L.C.
A Massachusetts Professional Corporation**



Baystate Health

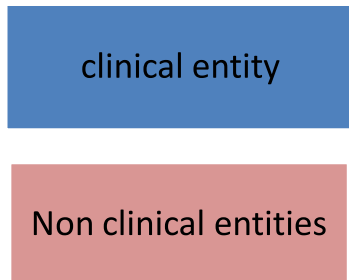
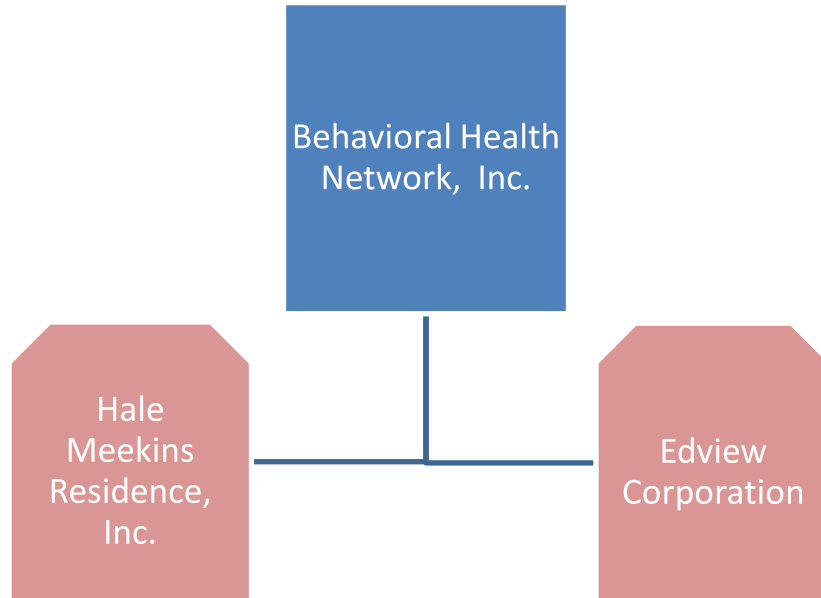
Baystate Health, Inc. Corporate Organizational Chart

Sole Member Entities or Sole Stockholder Entities



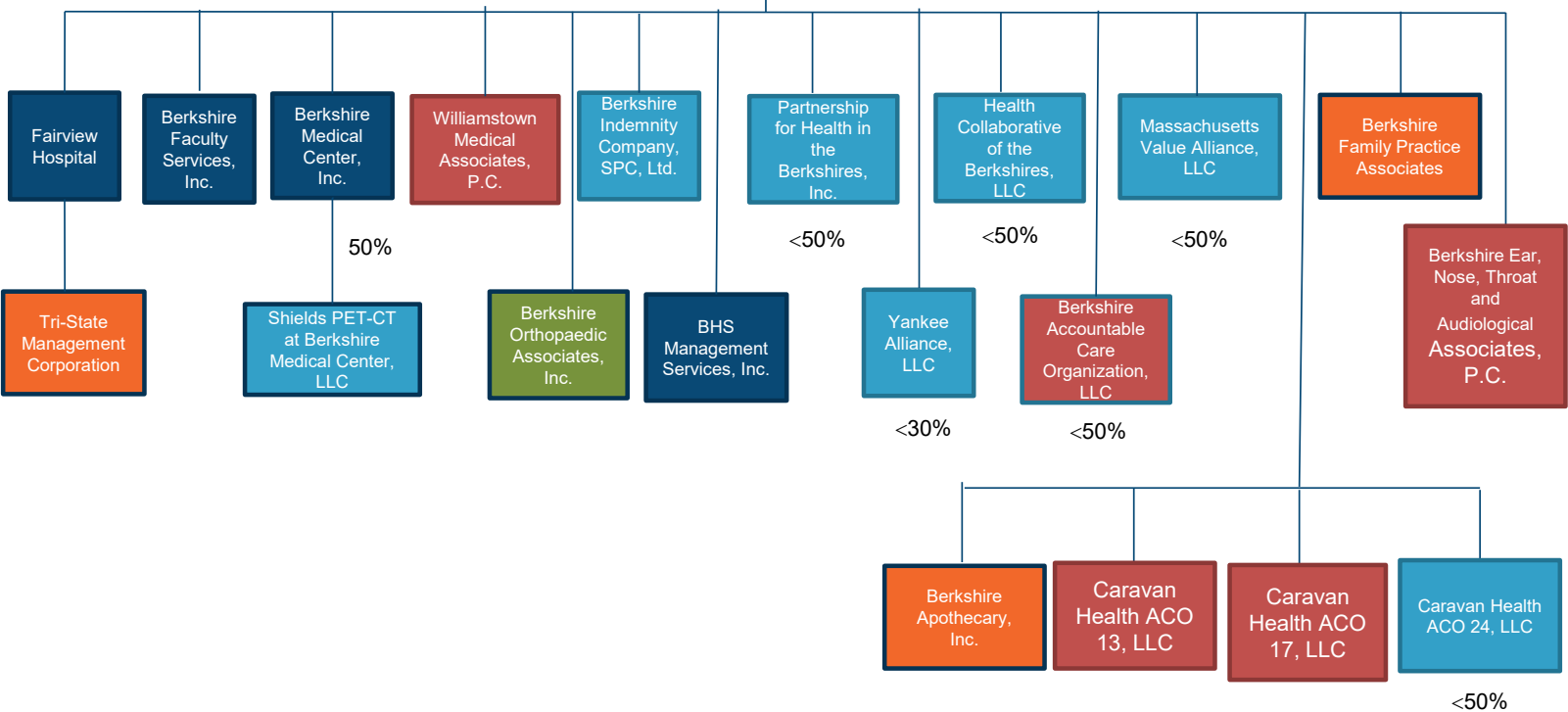
Key: Corporate Ownership
Clinical
Non-Clinical

Behavioral Health Network



Berkshire Health Systems

Berkshire Health Systems, Inc. 2023



Owned
Less than
100%

For Profit

Non-Profit & Tax-
Exempt

For Profit
Controlled
Professional
Corporation

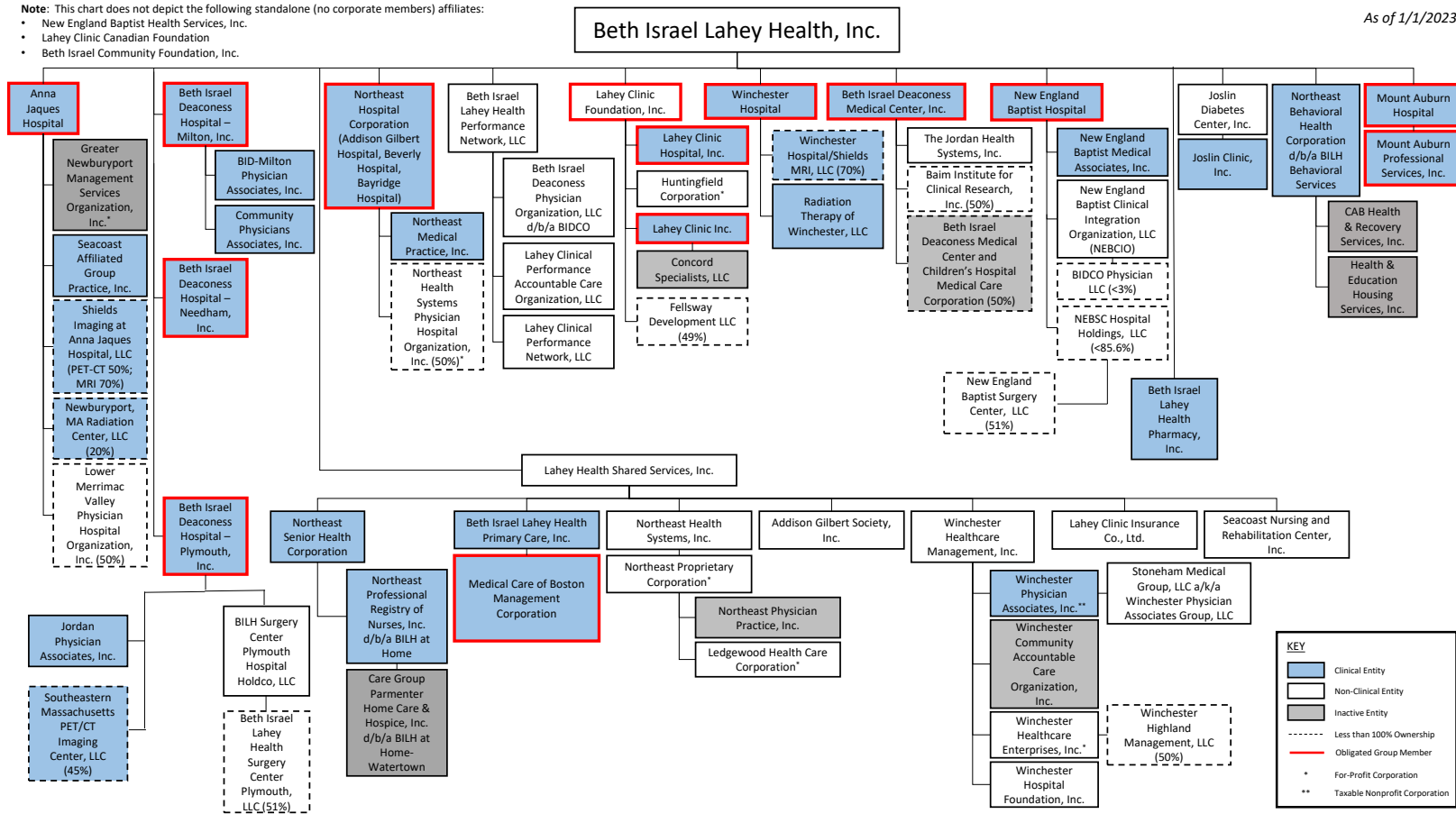
Inactive

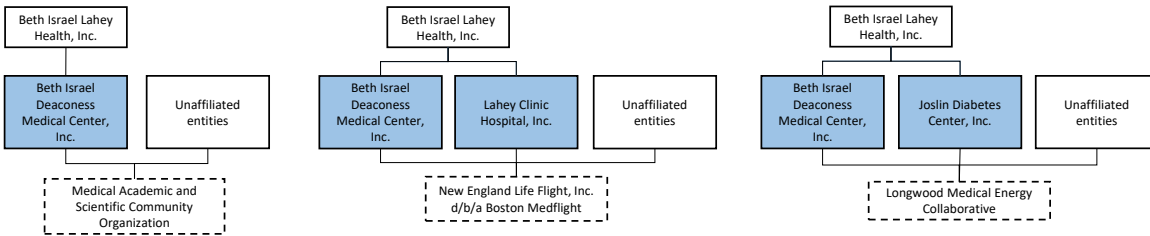
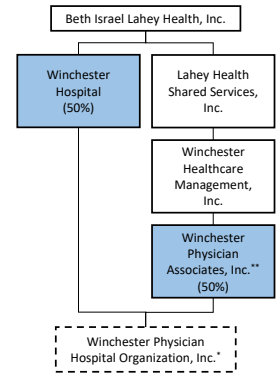
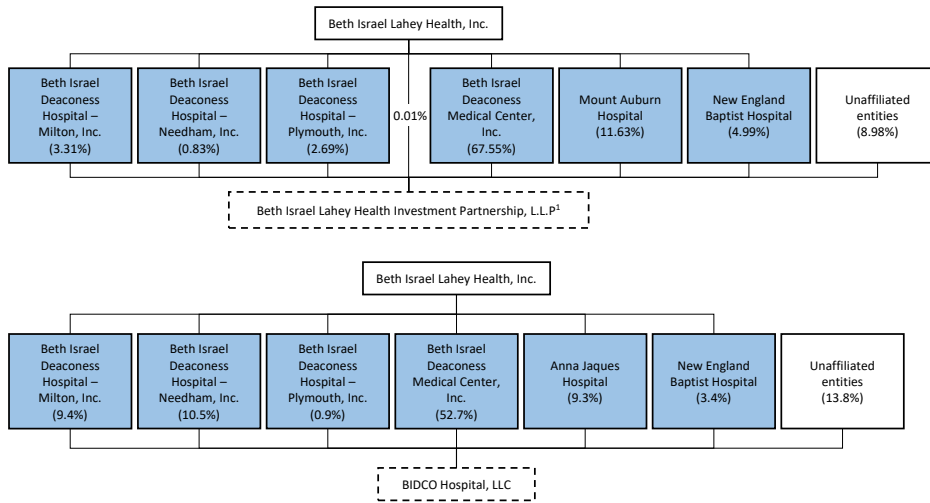
Beth Israel Lahey Health

Note: This chart does not depict the following standalone (no corporate members) affiliates:

- New England Baptist Health Services, Inc.
- Lahey Clinic Canadian Foundation
- Beth Israel Community Foundation, Inc.

As of 1/1/2023

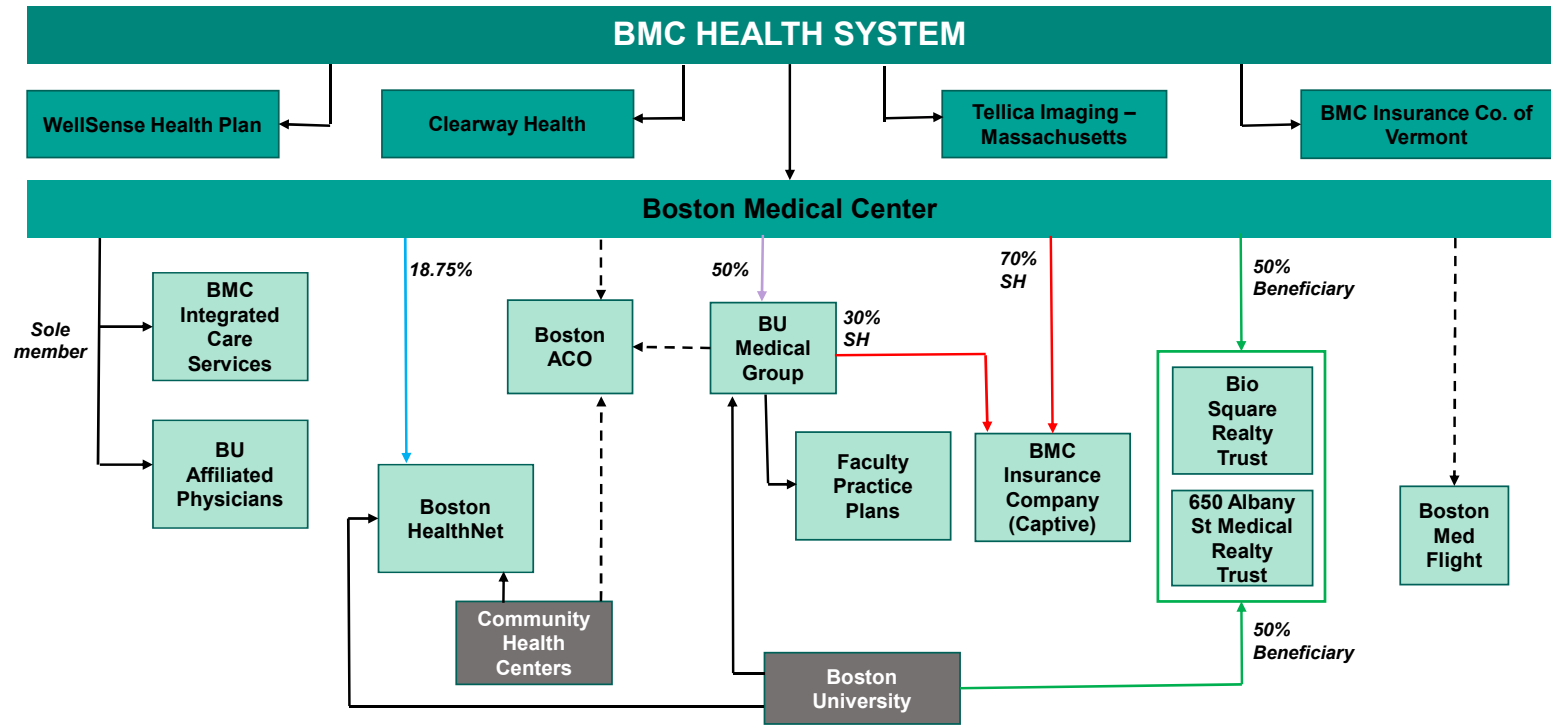




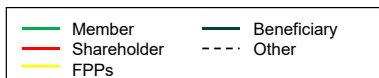
KEY	
Clinical Entity	Clinical Entity
Non-Clinical Entity	Non-Clinical Entity
Inactive Entity	Inactive Entity
-----	Less than 100% Ownership
*	For-Profit Corporation
**	Taxable Nonprofit Corporation

BMC Health System

Boston Medical Center Health System



BOSTON MEDICAL CENTER CORPORATION



Faculty Practice Foundation, Inc. (FPF, Inc.), dba Boston University Medical Group (BUMG)

BMC
MSO

BUSA

15 FPPs

Boston Emergency
Physician
Foundation, Inc.

Boston University
Dermatology, Inc.

Boston University
Eye Associates, Inc.

Boston University
Family Medicine, Inc.

Boston Rehabilitation
Medicine Associates,
Inc.

Boston University
Mallory Pathology
Associates, Inc.

Boston University
Neurology
Associates

Boston University
Obstetrics and
Gynecology
Foundation, Inc.

Boston University
Psychiatry
Associates, Inc.

Boston University
Radiation Oncology,
Inc.

Boston University
Medical Center
Radiologist, Inc.

Child Health
Foundation of
Boston, Inc.

Boston University
Internal Medicine
Associates

Boston University
Medical Center
Anesthesiologist,
Inc.

Evans Medical
Foundation, Inc.

7 FPPs

FPP
Boston University Cardiac and Thoracic
Surgical Foundation, Inc.

FPP
Boston University General Surgical
Associates, Inc.

FPP
Boston University Medical Center
Urologist, Inc.

FPP
Boston University Neurosurgical
Associates, Inc.

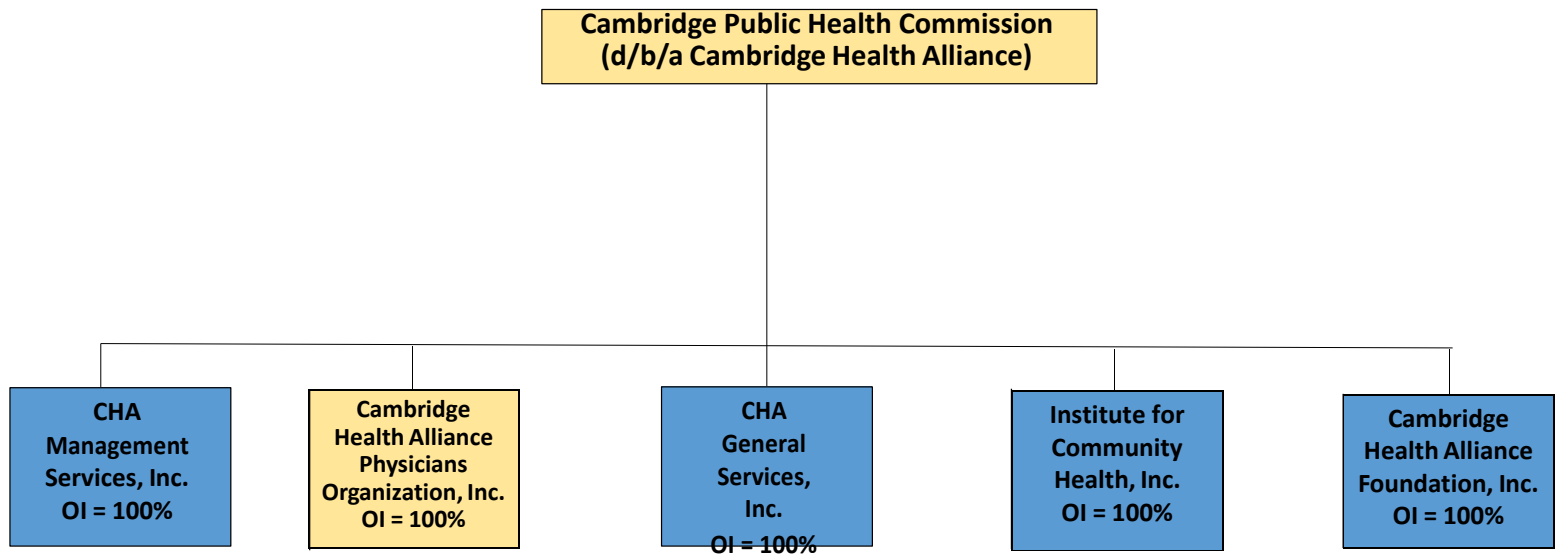
FPP
Boston University Orthopaedic Surgical
Associates, Inc.

FPP
BUMC Otolaryngologic Foundation, Inc.

FPP
Boston University Plastic Surgery
Associates, Inc.

Cambridge Health Alliance

Health Policy Commission – Registered Provider Organization Submission 2023
Cambridge Public Health Commission Organizational Chart

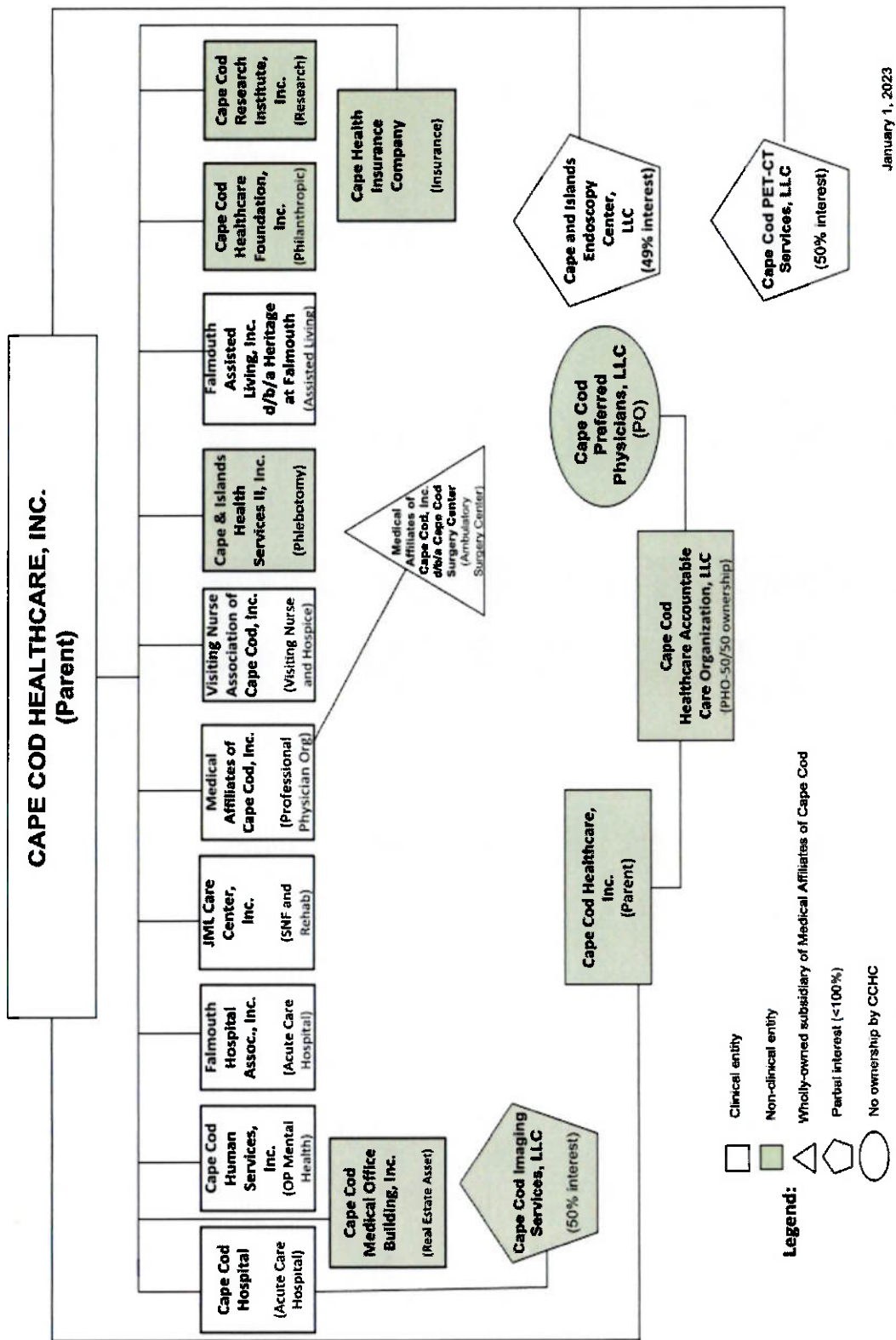


OI = Ownership Interest

Clinical

Non-Clinical

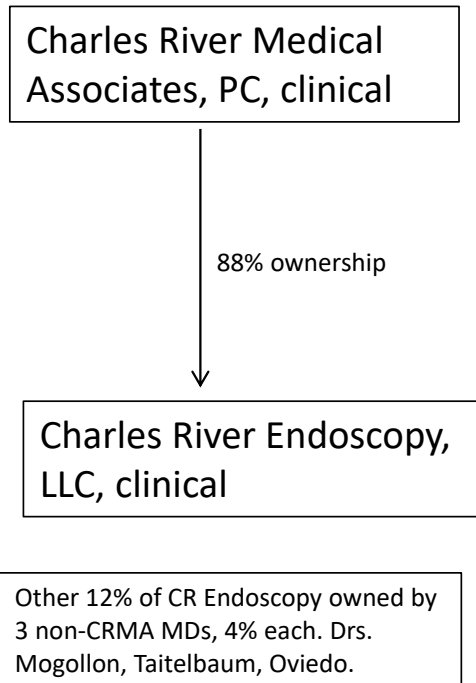
Cape Cod Healthcare



January 1, 2023

Charles River Medical Associates

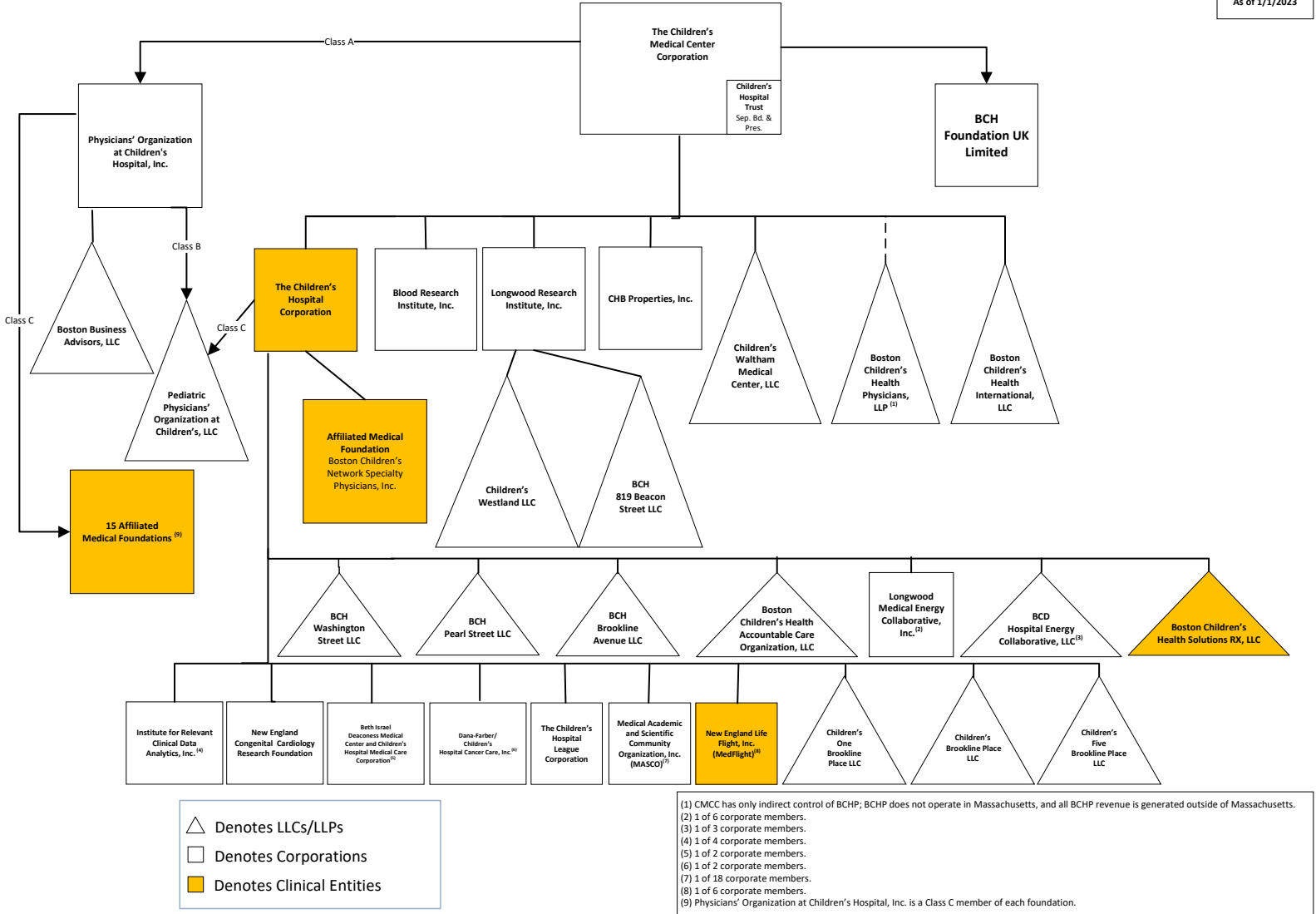
Charles River Medical Associates Organizational Chart December 2022



Children's Medical Center Corporation

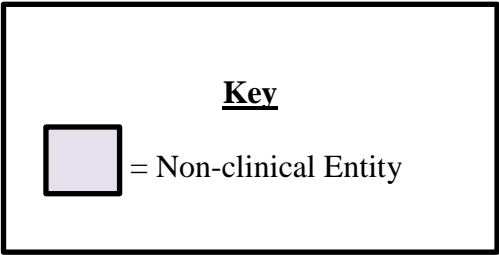
CHILDREN'S MEDICAL CENTER CORPORATION CORPORATE ORGANIZATION

As of 1/1/2023



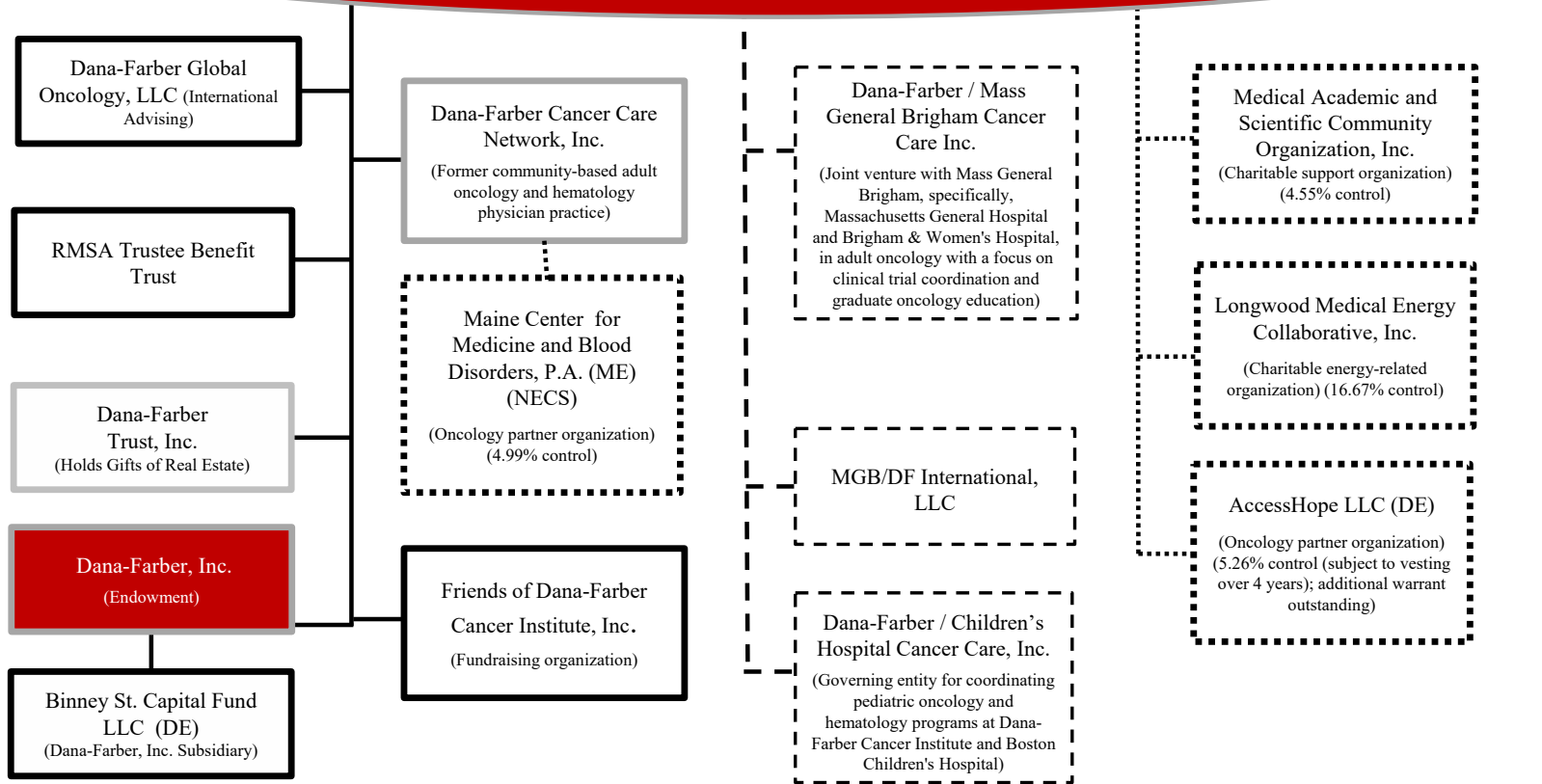
Community Care Cooperative

Community Care Cooperative, Inc.
Corporate Organizational Chart
2023



Dana-Farber Cancer Institute

DANA-FARBER CANCER INSTITUTE, INC.



Solid line: 100% owned by Dana-Farber Cancer Institute, Inc.

Dash line: controlled in part (50%) by Dana-Farber Cancer Institute, Inc.

Dotted line: minority controlled interest by Dana-Farber Cancer Institute, Inc

Oval: Licensed Clinical Entity

Rectangle: Non-Clinical Entity

Grey outline: Included in Consolidated Financials

Red fill: Members of Obligated Group

East Boston Neighborhood Health Center



EBNHC Organizational Chart

East Boston Neighborhood Health Center Corporation

Massachusetts 501(c)(3)

Incorporated: September 26, 1974

EIN: 23-7425849

Ten Garofalo Street Corporation

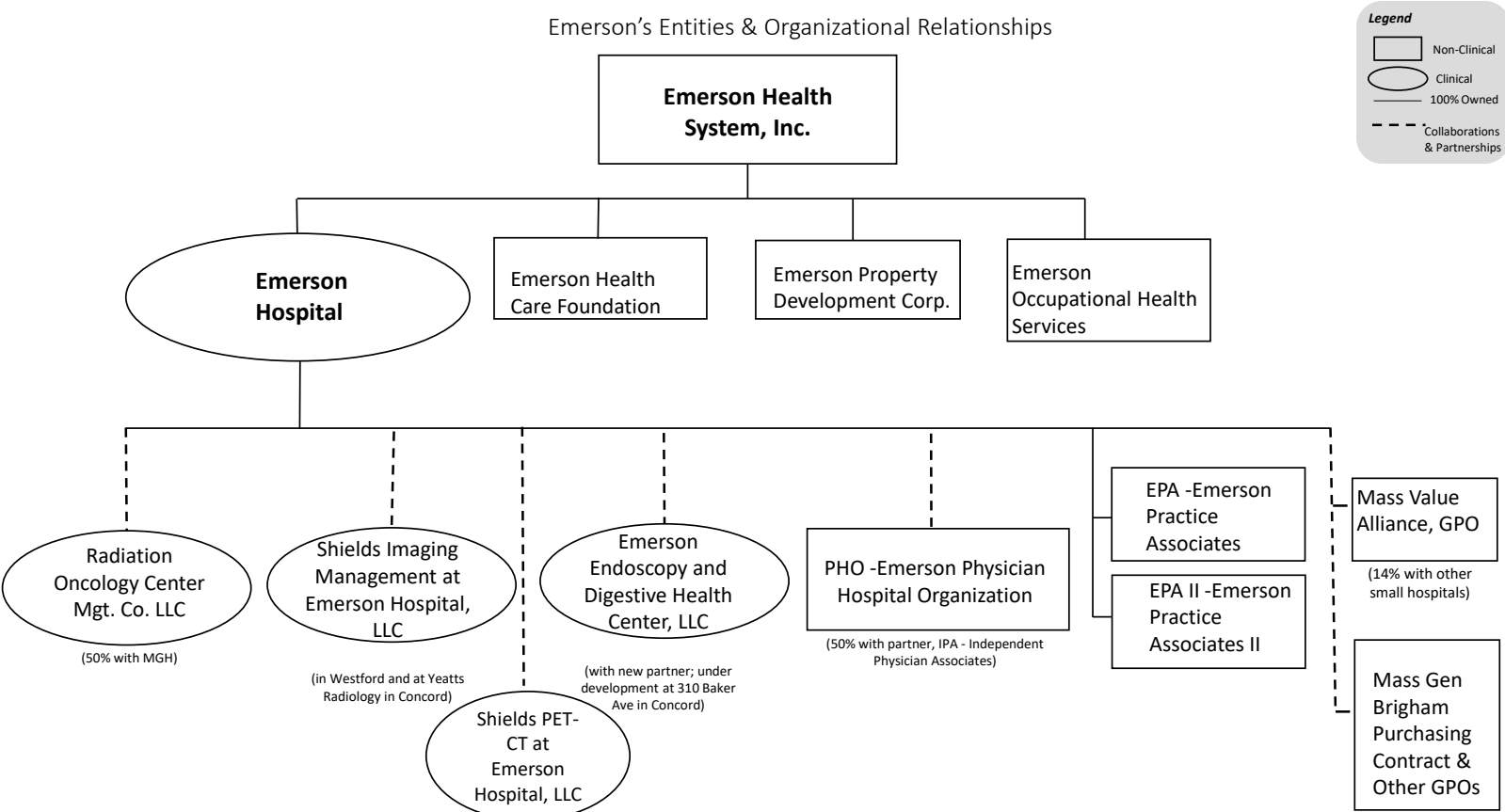
Massachusetts 501(c)(3)

Incorporated: April 10, 2017

EIN: 82-1162875

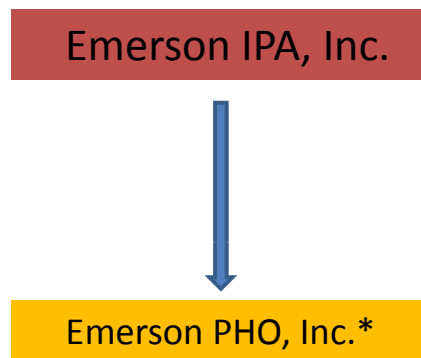
Emerson Health System

Emerson's Entities & Organizational Relationships



Emerson IPA

Corporate Organizational Chart



Key

* Emerson IPA has a 50% ownership of Emerson PHO

 Non-clinical entity

 Clinical entity

Encompass Health Corporation

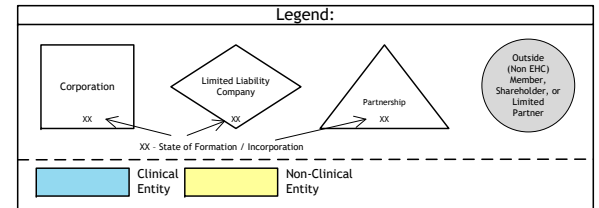
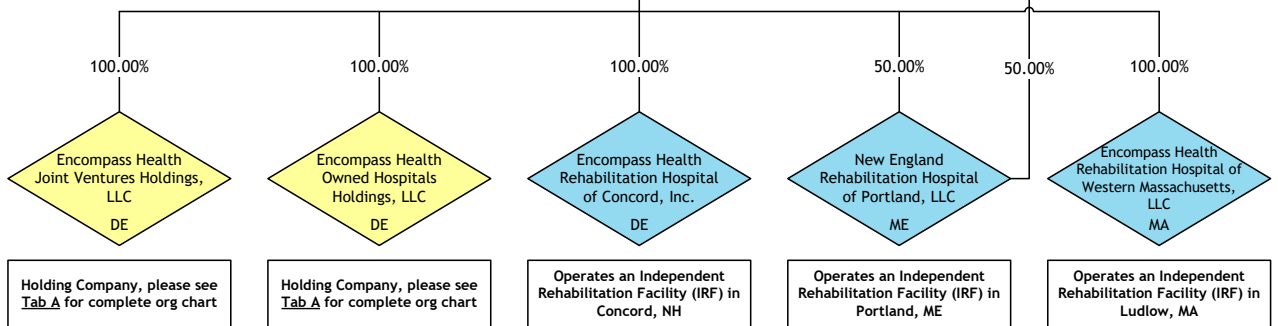
RPO-135 Corporate Org Chart
Encompass Health Corporation
Subsidiaries operating in the New
England Region as of 01/01/2023

New England
States
 Connecticut
 Maine
 Massachusetts
 New Hampshire
 Rhode Island
 Vermont
 (no operations)

Encompass Health Corporation
 DE

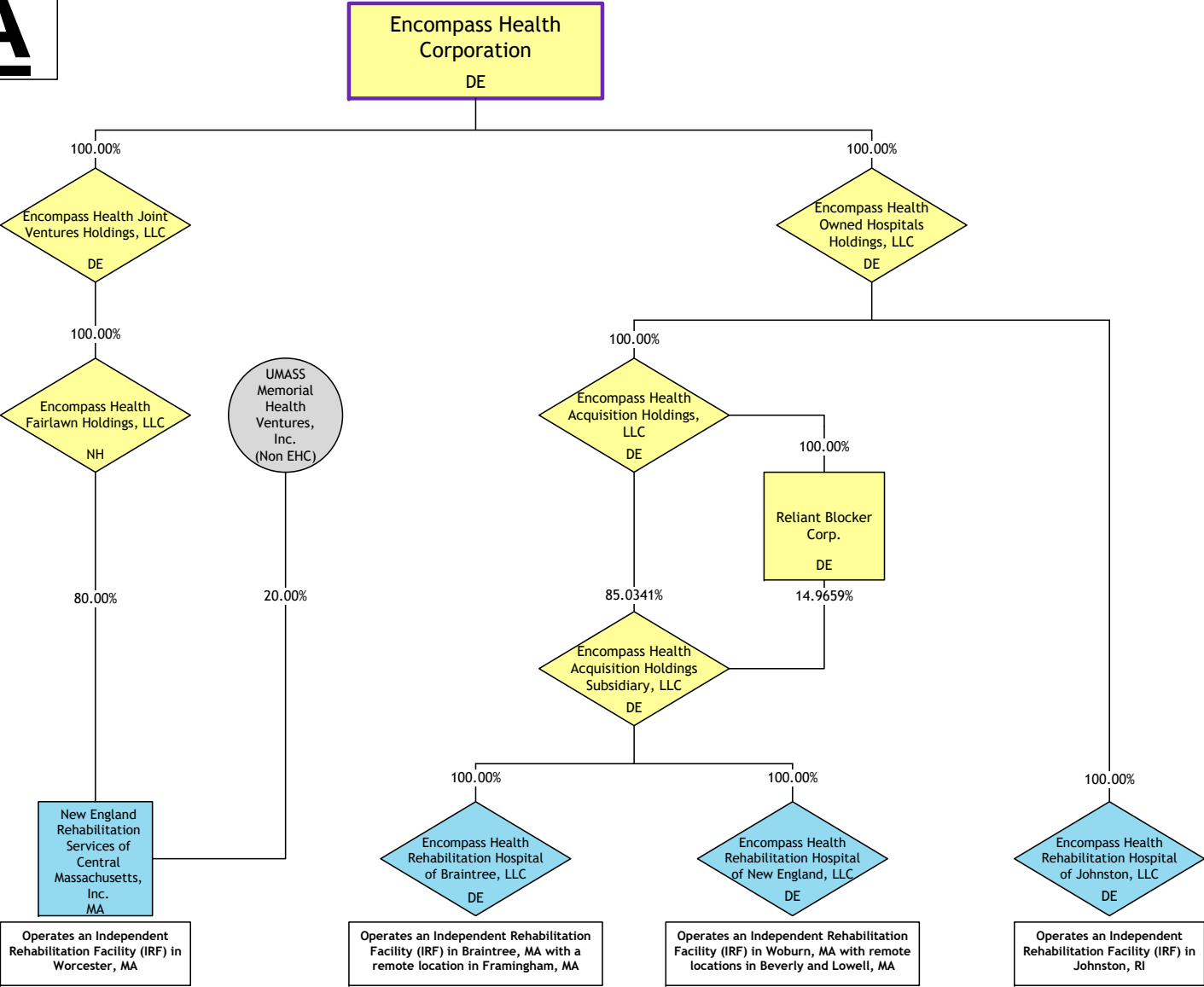
MMC
 CLINICAL
 SERVICES
 SUPPORT
 CORP
 (Non EHC)

As of 01/01/2023



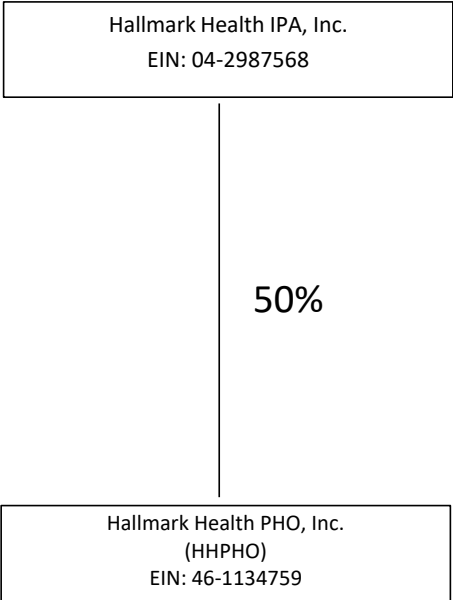


As of 01/01/2023



Hallmark Health IPA

Hallmark Health IPA, Inc.

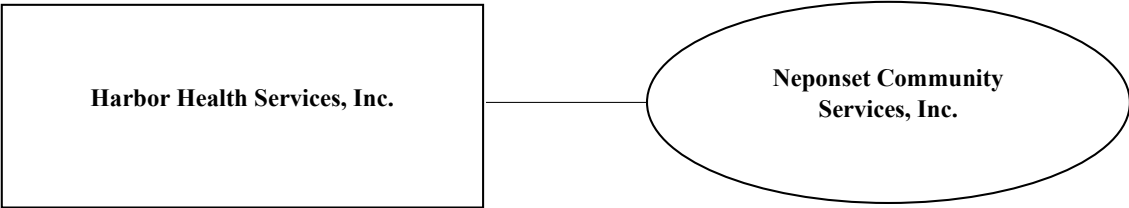
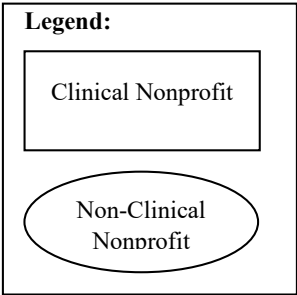


All 100% owned unless indicated
Blue = Clinical
Black = Non-Clinical

Harbor Health Services

Harbor Health Services, Inc.

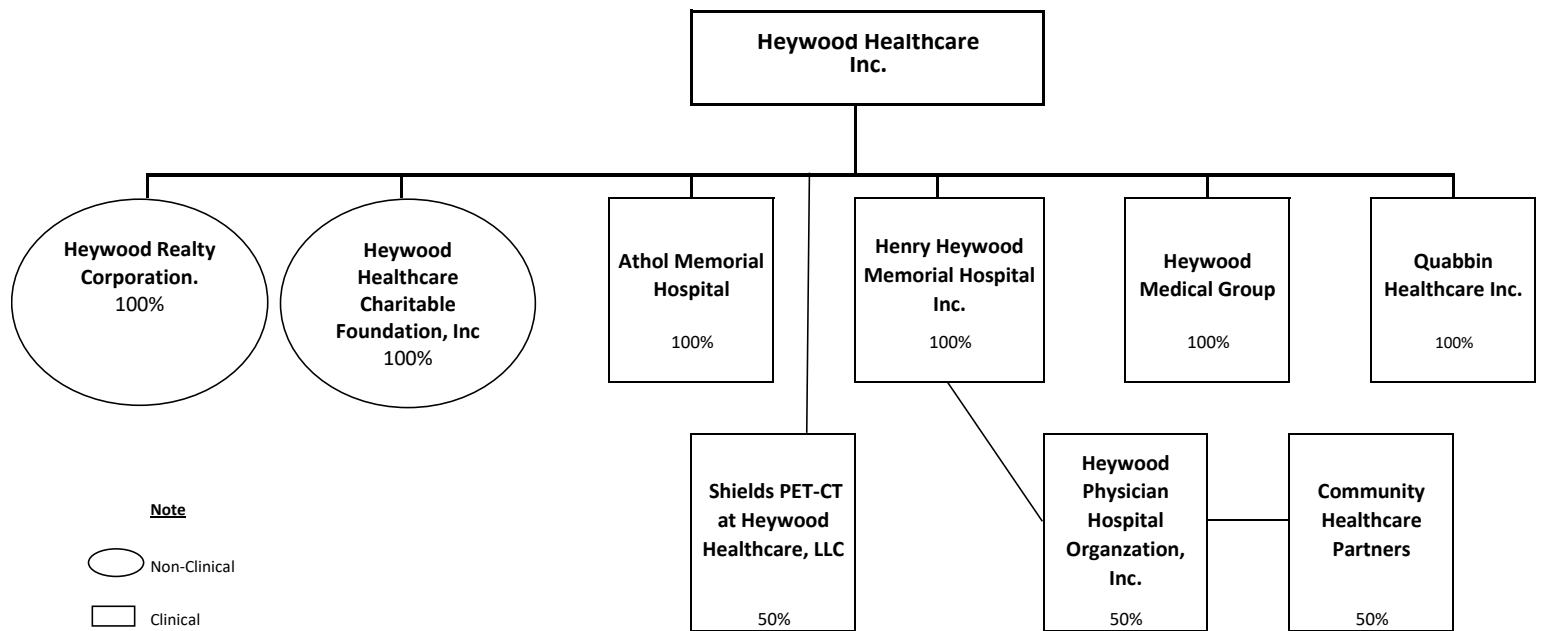
Corporate Organizational Chart



Heywood Healthcare

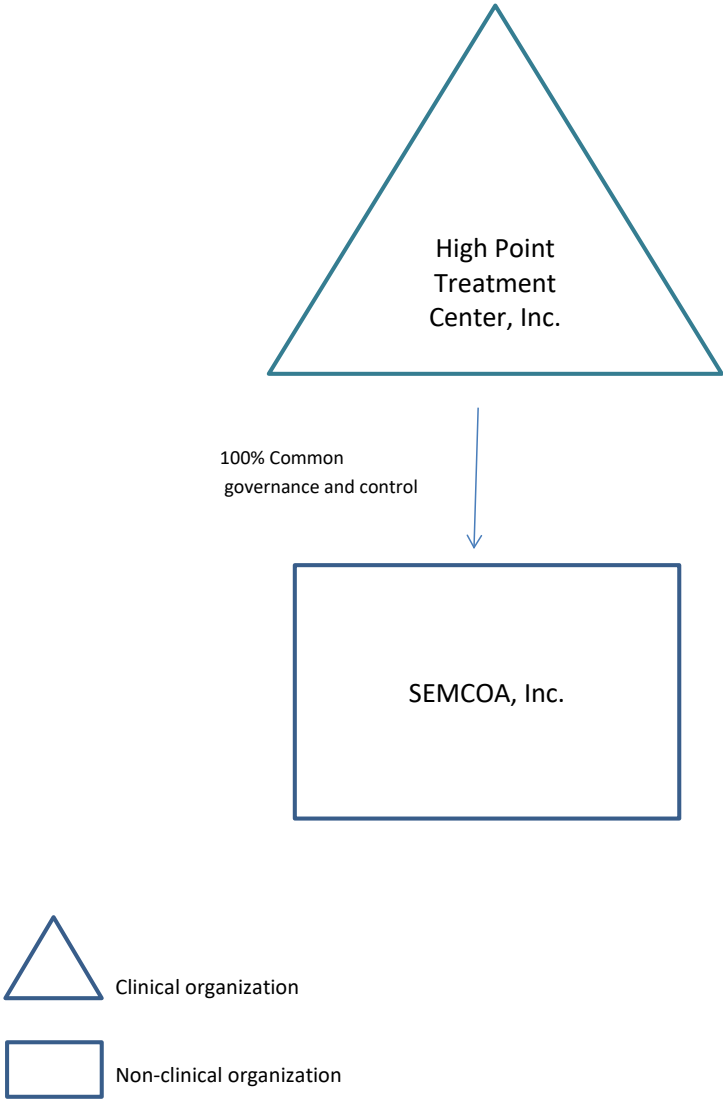


Corporate Organizational Chart



High Point Treatment Center

High Point Treatment Center, Inc. and Affiliate



High Point Treatment Center, Inc. is the parent organization for SEMCOA.
SEMCOA, Inc. is a 100% subsidiary of High Point Treatment Center, Inc.

Note: Effective 7/7/2021, Southeast Family Services, Inc. which was a stand alone organization with its own board of directors, merged with SEMCOA, Inc.

Highland Healthcare Associates IPA

Highland Healthcare Associates IPA, Inc. Corporate Organizational Chart

Highland Healthcare Associates IPA, Inc.
(the IPA)

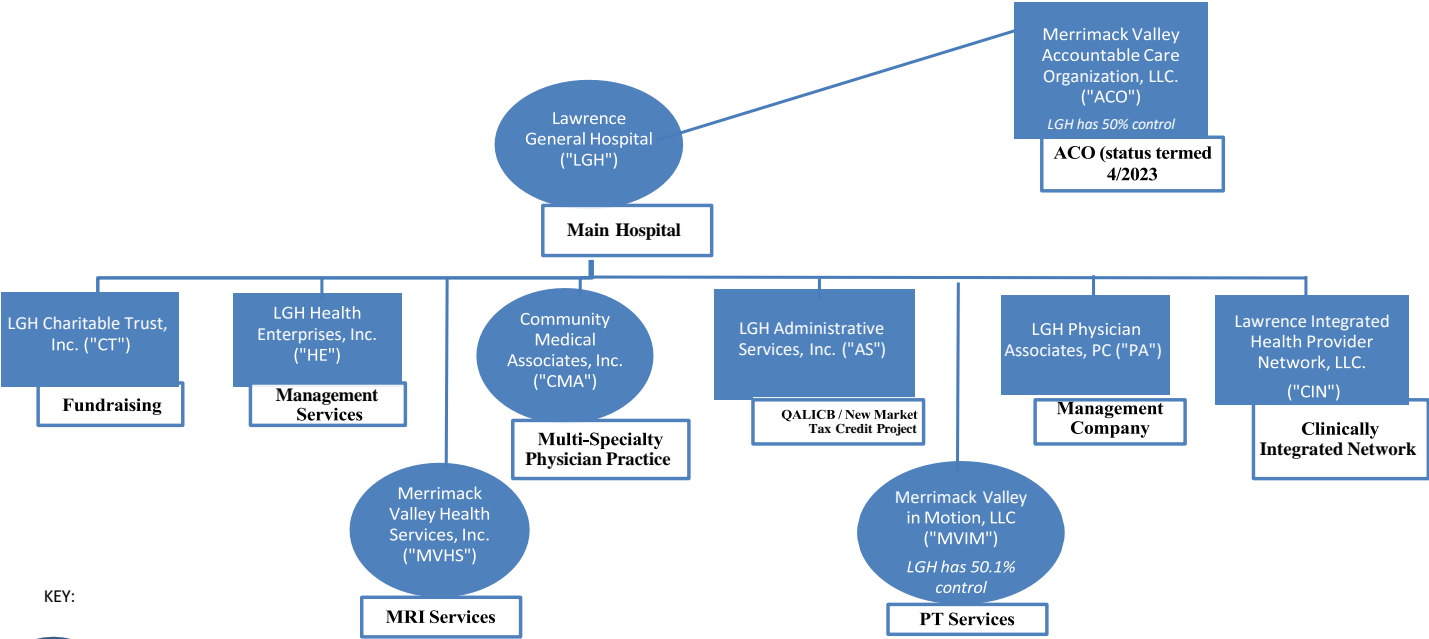
Winchester Highland Management, LLC (WHM)

The IPA is a 50%/50% owner of WHM, along with
Winchester Healthcare Enterprises (Winchester Hospital).





Lawrence General Hospital

LAWRENCE GENERAL HOSPITAL AND AFFILIATES
ORGANIZATIONAL CHART
AS OF JANUARY 1, 2023



KEY:

 Clinical Entity

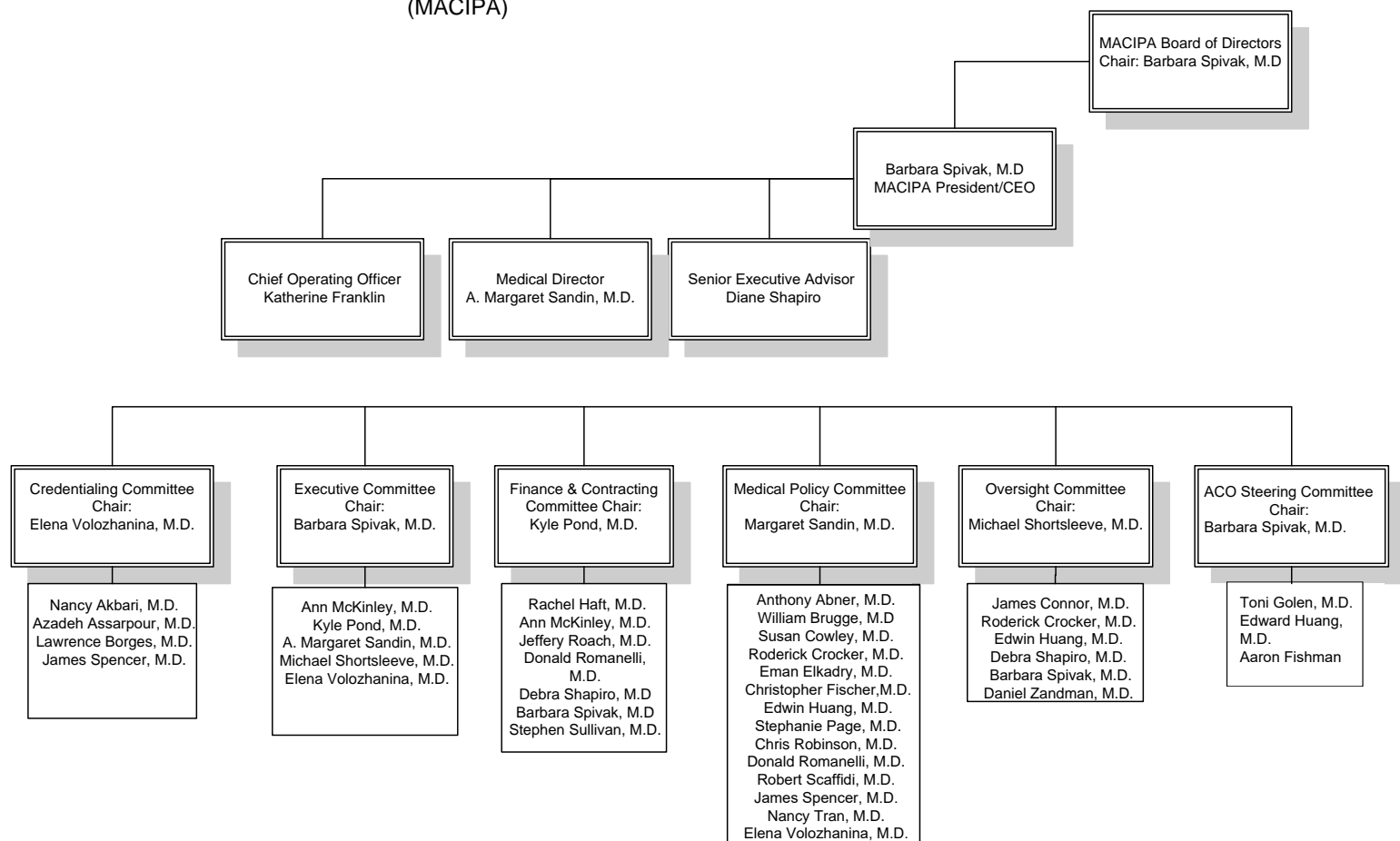
 Non-Clinical Entity

TAX IDs/EINs & TAX STATUS:

LGH = 04-2103586 - 501(c)3 nonprofit
CT = 22-2586814 - 501(c)3 nonprofit
HE = 04-2869696 - for-profit
CMA = 27-2142635 - 501(c)3 nonprofit
AS = 32-0423203 - 501(c)3 nonprofit
PA = 04-3174041 - for-profit
MVHS = 22-2604915 501(c)3 non-profit
MVIM = 32-0578008 - LLC
CIN = 85-3520796 - LLC

MACIPA

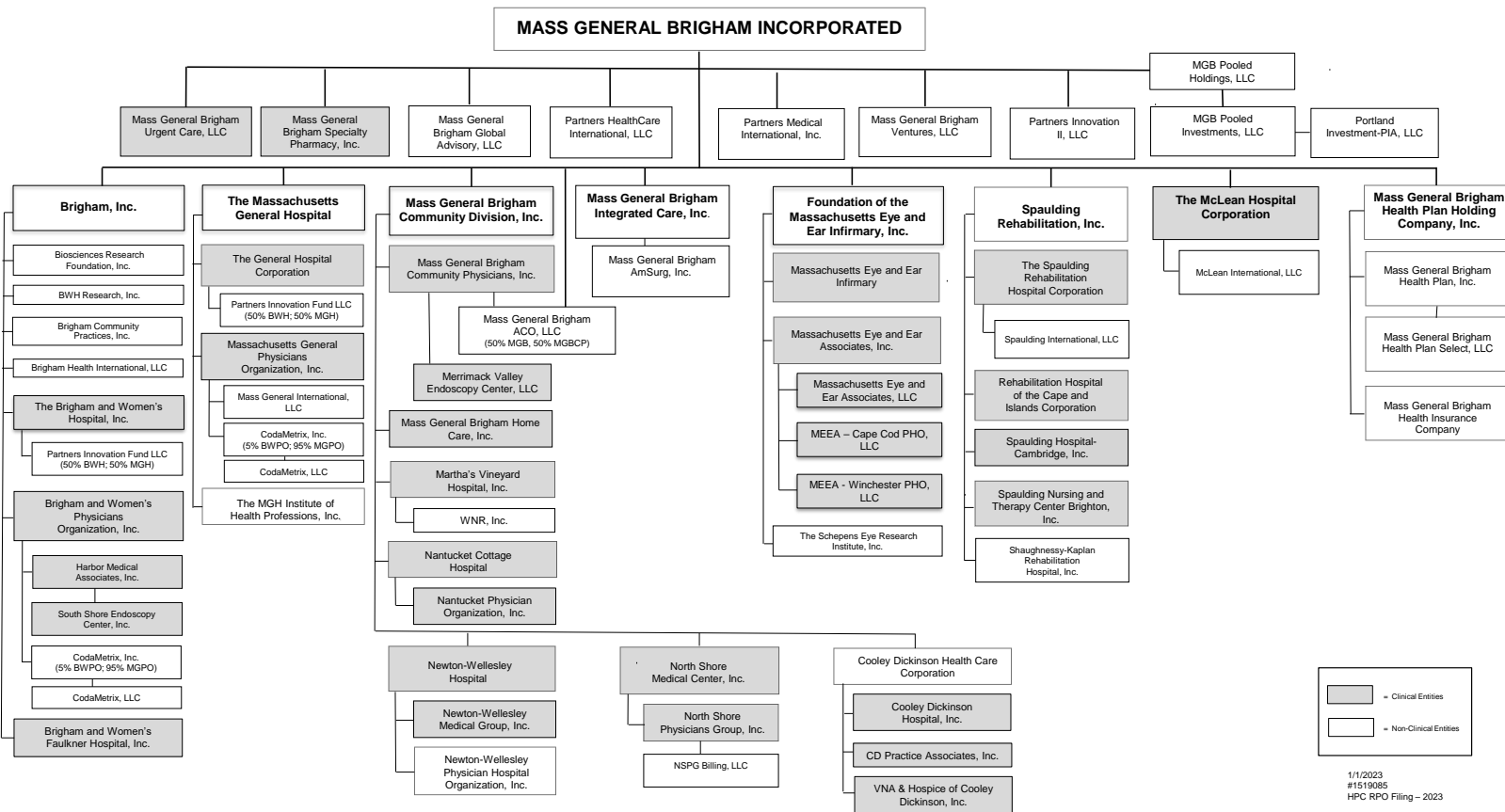
A3235-Mount Auburn Cambridge Independent Practice Association
(MACIPA)



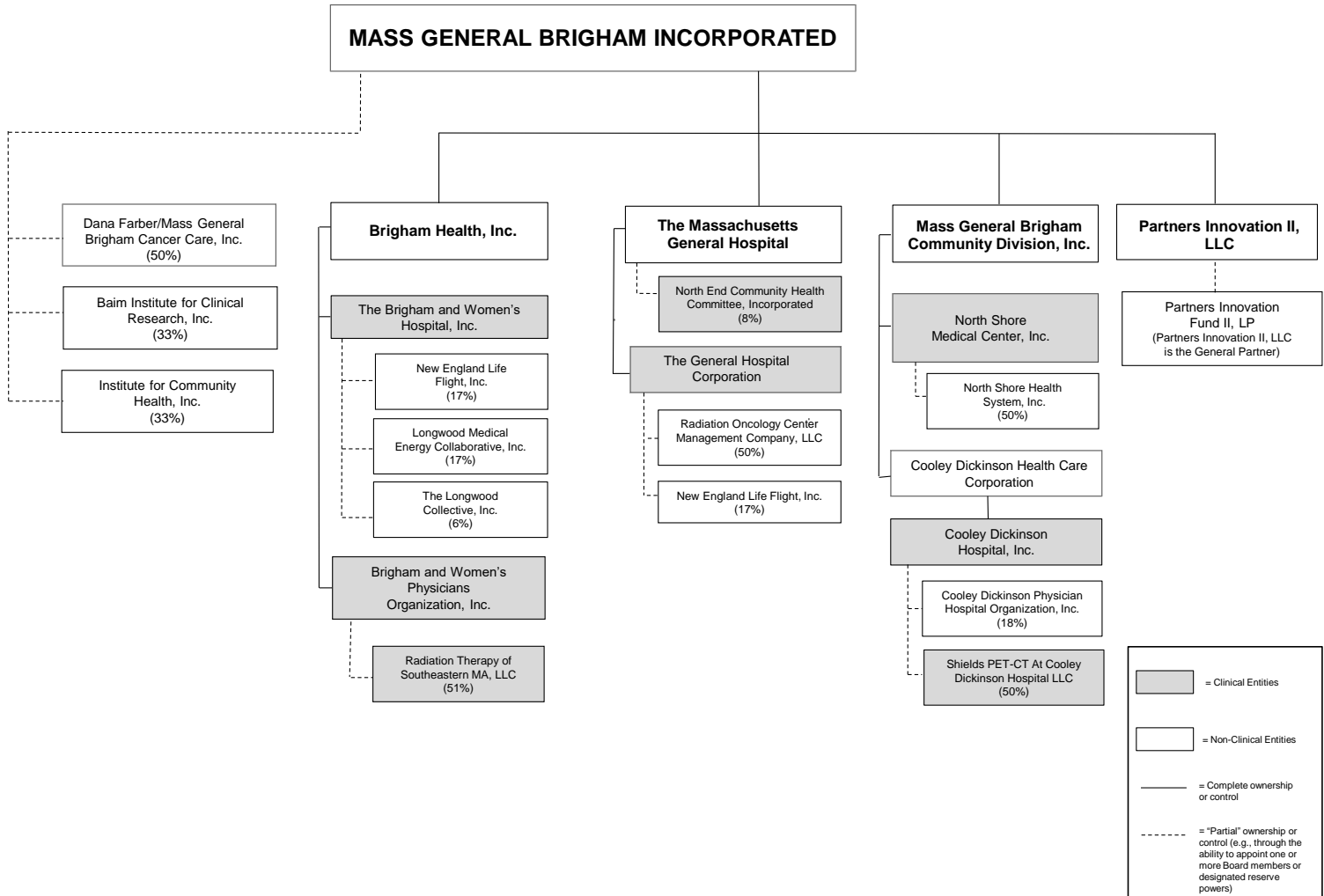
MACIPA
September 2023

Mass General Brigham

Corporate Organizational Chart – Complete Ownership or Control



Corporate Organizational Chart – “Partial” Ownership or Control



Milford Regional Medical Center

```
graph TD; A[Milford Regional Medical Center, Inc.  
(Clinical Community Hospital)] --- B[Milford Regional Physician Group, Inc.  
(Clinical Physician Practice)]; A --- C[Milford Regional Healthcare Foundation, Inc.  
(Non Clinical Entity)]; A --- D[MWRH Management Services, Inc.  
(Non Clinical Entity)];
```

Milford Regional
Medical Center, Inc.
(Clinical Community
Hospital)

Milford Regional
Physician Group, Inc.
(Clinical Physician
Practice)

Milford Regional
Healthcare
Foundation, Inc.
(Non Clinical
Entity)

MWRH
Management
Services, Inc.
(Non Clinical
Entity)

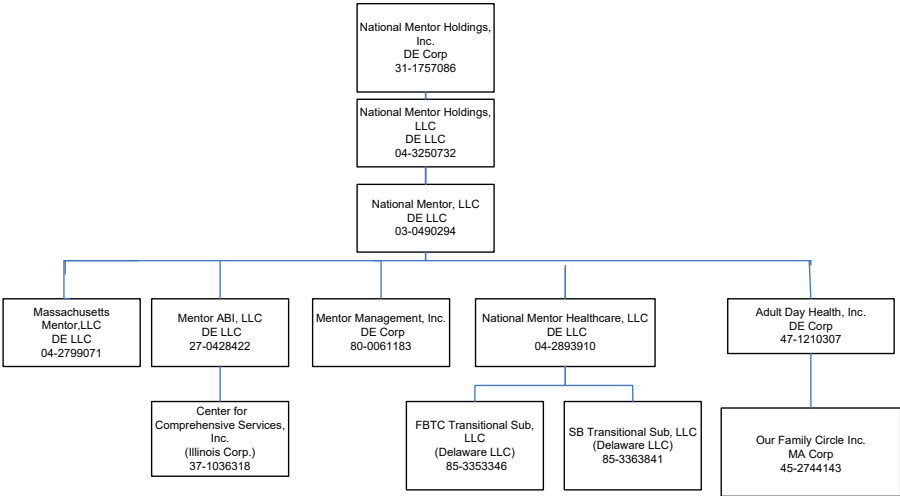
Monogram Health Professional Services

MONOGRAM HEALTH PROFESSIONAL SERVICES, P.C. ORGANIZATIONAL CHART



National Mentor LLC

Massachusetts Organizational Chart (Oct. 2022)



New England Orthopedic Surgeons

New England Orthopedic Surgeons, Inc.
Corporate Organizational Chart
1/1/2023

New England Orthopedic Surgeons, Inc.
EIN: 04-2521996

Key



= Clinical Entity

Quest Diagnostics

QUEST DIAGNOSTICS INCORPORATED (DE) – Clinical⁴
 (INCORPORATED ON DECEMBER 12, 1990 IN DELAWARE; EIN: 16-1387862)
CORPORATE AFFILIATES¹

COMPANY		REGISTERED ALTERNATE NAME	US EIN
100% Quest Diagnostics Holdings Incorporated (DE) – Non-Clinical ²			23-2324658
	100% Quest Diagnostics Clinical Laboratories, Inc. (DE) – Clinical	Advanced Toxicology Network Smithkline Beecham Clinical Laboratories	38-2084239
	100% LabOne, LLC (MO) – Non-Clinical ²	Quest Diagnostics LabOne, LLC of Kansas	43-1039532
	100% ExamOne World Wide, Inc. (PA) – Non-Clinical ³		23-2057350
	100% PACK Health, LLC (AL) – Clinical ³	PACK Health Enterprise LLC	46-4018650
100% Quest Diagnostics LLC (MA) – Clinical		Quest Diagnostics LLC Quest Diagnostics of Connecticut LLC	04-3248020
	81.1% Quest Diagnostics Massachusetts LLC (MA) – Clinical		46-1491586
100% Quest Diagnostics TB, LLC (DE) – Clinical			20-8528566
100% Blueprint Genetics Inc. (DE) – Clinical		Athena Diagnostics	31-1805826
100% Cleveland HeartLab, Inc. (DE) – Clinical ³		Cleveland Heartlab Services, Inc.	27-1117058
100% Med Fusion, LLC (TX) – Clinical ⁵			
100% Nomad Massachusetts, Inc. (MA) – Non-Clinical ³			04-2704542
100% Reprosourse Fertility Diagnostics, Inc. (MA) – Clinical			26-2679473
100% AmeriPath, Inc. (DE) – Non-Clinical ²			20-3746016
	100% AmeriPath New York, LLC (DE) – Clinical	AmeriPath East AmeriPath Gastrointestinal Diagnostics AmeriPath Northeast DermPath Diagnostics DermPath Diagnostics NE-Braintree Ackerman Academy of Dermatopathology DermPath Diagnostics New York DermPath Diagnostics New England	65-0819138
	100% Specialty Laboratories, Inc. (CA) – Non-Clinical ³	Quest Diagnostics Nichols Institute of Valencia, Inc.	95-2961036

¹ Subsidiaries listed all the way over to the left are directly owned by Quest Diagnostics Incorporated. Indented subsidiaries are owned by the organization directly above it.

² Not registered in Massachusetts, shown only for ownership structure purposes.

³ Registered in Massachusetts, no physical locations.

⁴ Provider Entity, no physical locations in Massachusetts.

⁵ Not registered in Massachusetts, no physical locations, contracting entity.

QUEST DIAGNOSTICS INCORPORATED (DE)¹
 (INCORPORATED ON DECEMBER 12, 1990 IN DELAWARE; EIN: 16-1387862)
SUBSIDIARIES, JOINT VENTURES AND AFFILIATES

COMPANY		REGISTERED ALTERNATE NAME	US EIN	FOREIGN EIN
100% Quest Diagnostics Holdings Incorporated (DE)			23-2324658	
	100% Quest Diagnostics International Holdings Limited (UK)		98-1406655	42173 13460
	100% Quest Diagnostics Holdings Ltd. (UK)		98-1222145	37190 27357
	100% ExamOne Canada, Inc. (New Brunswick)			862342102
	99.9% Quest Diagnostics HTAS India Private Limited (India) (0.1% Quest Diagnostics International Holdings Limited (UK)			AAACQ4965F
	100% Quest Diagnostics of Puerto Rico, Inc. (PR)		66-0605229	
	100% Quest Diagnostics Ireland Limited (Ireland)			9703871G
	100% Quest Diagnostics (Shanghai) Co., Ltd. (China)			91310000MA1FROM18E
	100% Quest Diagnostics Clinical Laboratories, Inc. (DE)	Advanced Toxicology Network Labtech Diagnostics Quest Diagnostics Solstas Lab Partners Group Solstas Lab Partners Smithkline Beecham Clinical Laboratories	38-2084239	
	100% Quest Consumer Inc. (DE)		92-1801912	
	100% LabOne, LLC (MO)	Quest Diagnostics LabOne, LLC of Kansas	43-1039532	
	100% ExamOne World Wide, Inc. (PA)		23-2057350	
	100% ExamOne LLC (DE)		30-0704506	
	100% ExamOne World Wide of NJ, Inc. (NJ)		22-2127674	
	51% DGXWMT JV, LLC (DE)	Health Check by Quest Diagnostics	82-3125576	
	100% PACK Health, LLC (AL)	PACK Health Enterprise LLC	46-4018650	
	100% Quest HealthConnect, LLC (CA)		33-0423631	
	100% Quest Diagnostics Health & Wellness, LLC (DE)		20-1908041	
	100% LabOne of Ohio, Inc. (DE)	Quest Diagnostics LabOne	20-0310967	
	51% Diagnostic Laboratory of Oklahoma LLC (OK)		73-1560760	
	49% Sonora Quest Laboratories LLC (AZ)		86-0872873	
100% Quest Diagnostics do Brasil Ltda. (Brazil)			83-3000959	02.213.366/0001-74

¹ Registered Alternate Name: QDI Delaware Incorporated

COMPANY		REGISTERED ALTERNATE NAME	US EIN	FOREIGN EIN
100% Quest Diagnostics Incorporated (MD)			52-0890739	
100% Quest Diagnostics India Private Limited (India)			20-8698020	AAACQ1468R
100% Quest Diagnostics International LLC (DE)			46-2084961	
100% Quest Diagnostics Investments LLC (DE)			51-0314231	
100% Quest Diagnostics LLC (IL)		Quest Diagnostics LLC	36-4257926	
100% Quest Diagnostics LLC (MA)		Quest Diagnostics LLC Quest Diagnostics of Connecticut LLC	04-3248020	
	81.1% Quest Diagnostics Massachusetts LLC (MA)		46-1491586	
100% Quest Diagnostics LLC (CT)			06-1460613	
99.9% Quest Diagnostics Mexico, S de RL de CV (Mexico) (0.1% Quest Diagnostics Holdings Incorporated (DE))			98-1197453	QDM-521124S17
100% Quest Diagnostics Nichols Institute (CA)		Nichols Institute Quest Diagnostics Nichols Institute (CA) Inc. Quest Diagnostics Nichols Institute Inc.	95-2701802	
100% Quest Diagnostics of Pennsylvania Inc. (DE)			22-3137283	
	51% Quest Diagnostics Venture LLC (PA)		23-2933949	
	53.5% Associated Clinical Laboratories of Pennsylvania, L.L.C. (PA)		45-3688292	
	1% Associated Clinical Laboratories, L.P. (PA)		25-1533746	
	52.97% Associated Clinical Laboratories, L.P. (PA)		25-1533746	
100% Quest Diagnostics Receivables Inc. (DE)			22-3695703	
100% Quest Diagnostics TB, LLC (DE)			20-8528566	
100% Blueprint Genetics Inc. (DE)			31-1805826	

COMPANY		REGISTERED ALTERNATE NAME	US EIN	FOREIGN EIN
100% American Medical Laboratories, Incorporated (DE)			54-1983356	
	100% Quest Diagnostics Nichols Institute, Inc. (VA)	Nichols Institute Quest Diagnostics Quest Diagnostics Nichols Institute, Inc. of Virginia	54-0854787	
	100% Quest Diagnostics Incorporated (NV)	Quest Diagnostics Incorporated of Nevada Quest Diagnostics	88-0099333	
100% Blueprint Genetics Oy (Finland)			98-1290925	2230790-0
	100% Blueprint Genetics FZ-LLC (UAE)			
100% Cleveland HeartLab, Inc. (DE)		Cleveland Heartlab Services, Inc.	27-1117058	
100% Isabella Street Urban Renewal, LLC (NJ)			83-0998167	
100% Med Fusion, LLC (TX)		med fusion med fusion clin-trials med fusion clin-labs	27-0720545	
100% Reprosource Fertility Diagnostics, Inc. (MA)			26-2679473	
100% Unilab Corporation (DE)		Quest Diagnostics	71-0897031	
100% AmeriPath, Inc. (DE)			65-0642485	
	100% AmeriPath Cincinnati, Inc. (OH)	Richfield Laboratory of Dermatopathology	31-0744468	
	100% AmeriPath Cleveland, Inc. (OH)		34-1194233	
	100% AmeriPath Consolidated Labs, Inc. (FL)		26-0003506	
	100% AmeriPath Florida, LLC (DE)	AmeriPath Central Florida AmeriPath South Florida AmeriPath Southwest Florida Bay Area Dermatopathology Dermpath Diagnostics Dermpath Diagnostics Bay Area Dermpath Diagnostics South Florida Institute for Immunofluorescence Institute for Podiatric Pathology	65-0641688	
	100% AmeriPath Hospital Services Florida, LLC (DE)		16-1702356	
	100% AmeriPath Kentucky, Inc. (KY)		62-1373947	

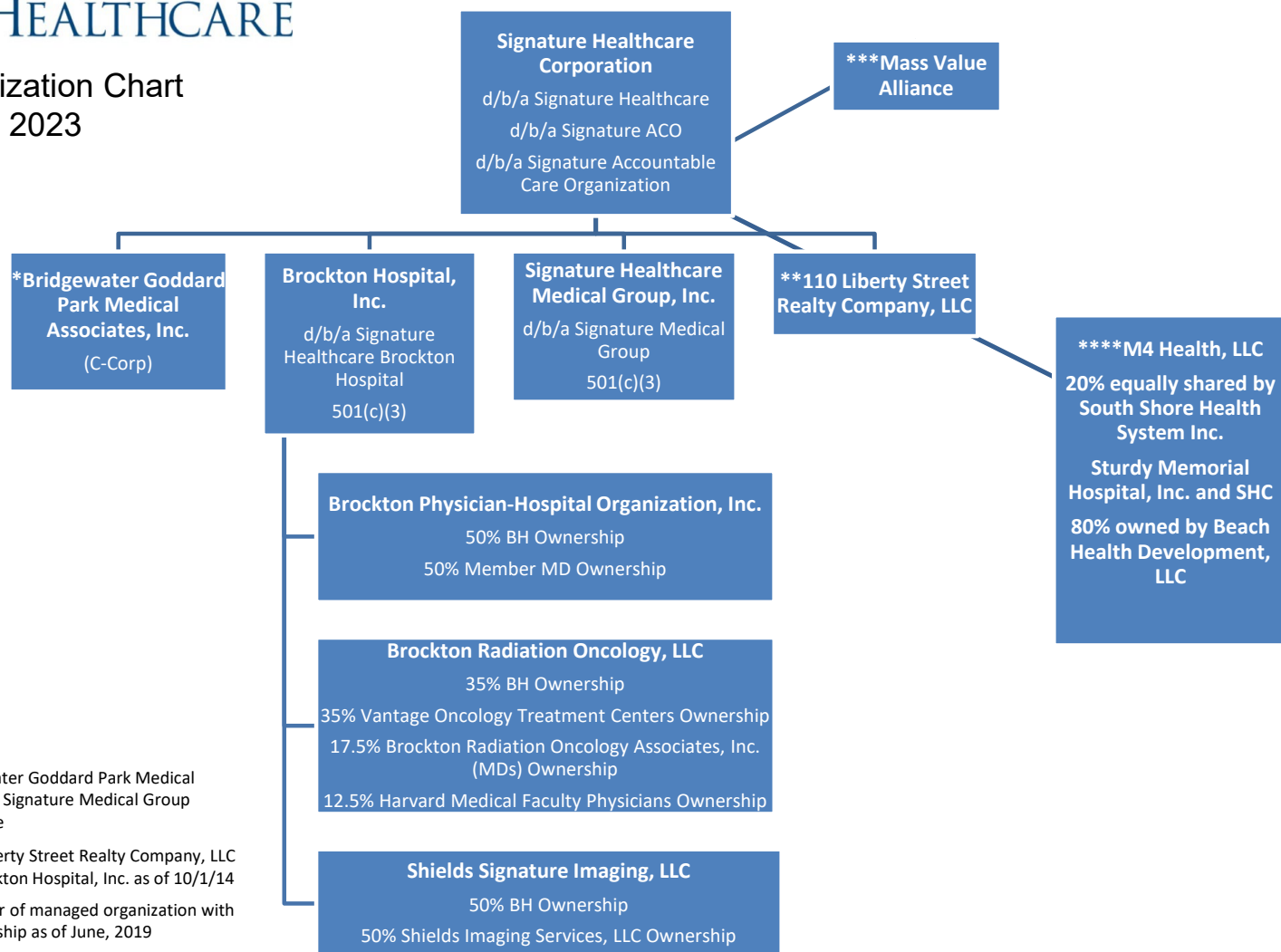
COMPANY		REGISTERED ALTERNATE NAME	US EIN	FOREIGN EIN
	100% AmeriPath Lubbock 5.01(A) Corporation (TX)	Arlington Pathology Associates DermPath Diagnostics Texas North Arlington Pathology Associates Pathology Associates of Texas	75-2773490	
	100% AmeriPath New York, LLC (DE)	AmeriPath East AmeriPath Gastrointestinal Diagnostics AmeriPath Northeast DermPath Diagnostics DermPath Diagnostics NE-Braintree Ackerman Academy of Dermatopathology DermPath Diagnostics New York	65-0819138	
	100% AmeriPath Texas Inc. (DE)		75-2530066	
	100% AmeriPath Tucson, Inc. (AZ)	AmeriPath Arizona	86-1004153	
	100% Consolidated DermPath, Inc. (DE)		46-2322827	
	100% DFW 5.01(a) Corporation (TX)	AmeriPath North Texas AmeriPath Dallas AmeriPath DFW 5.01(a) Corporation	75-2722708	
	100% Diagnostic Pathology Services, Inc. (OK)	AmeriPath Oklahoma	73-1193626	
	100% Kailash B. Sharma, M.D., Inc. (GA)		58-1416059	
	100% Nuclear Medicine and Pathology Associates (GA)		58-1446543	
	100% Institute for Dermatopathology, Inc. (PA)	AmeriPath Mid Atlantic DermPath Diagnostics The Dermatopathology Laboratory	23-2893988	
	100% Ocmulgee Medical Pathology Association, Inc. (GA)	AmeriPath Georgia Gastrointestinal Diagnostics DermPath Diagnostics	58-1267100	
	100% Specialty Laboratories, Inc. (CA)	Quest Diagnostics Nichols Institute of Valencia, Inc.	95-2961036	

ADDITIONAL ENTITIES CONSOLIDATED FOR ACCOUNTING PURPOSES			
AmeriPath Indianapolis, PC (IN)	AmeriPath Indianapolis, PSC AmeriPath Indianapolis Medical Pathology Dermopath Diagnostics	35-2037910	
Colorado Pathology Consultants, P.C. (CO)	AmeriPath Colorado Dermopath Diagnostics	84-1331556	
Dermatopathology of Wisconsin, S.C. (WI)	AmeriPath Great Lakes	39-1650425	
Hoffman, M.D., Associated Pathologists, Chartered (NV)	Associated Pathologists, Chartered	88-0103554	
Kilpatrick Pathology, P.A. (NC)		56-2160482	
PhenoPath Laboratories, PLLC (WA)		91-1862536	

Signature Healthcare Corporation



Organization Chart 2023



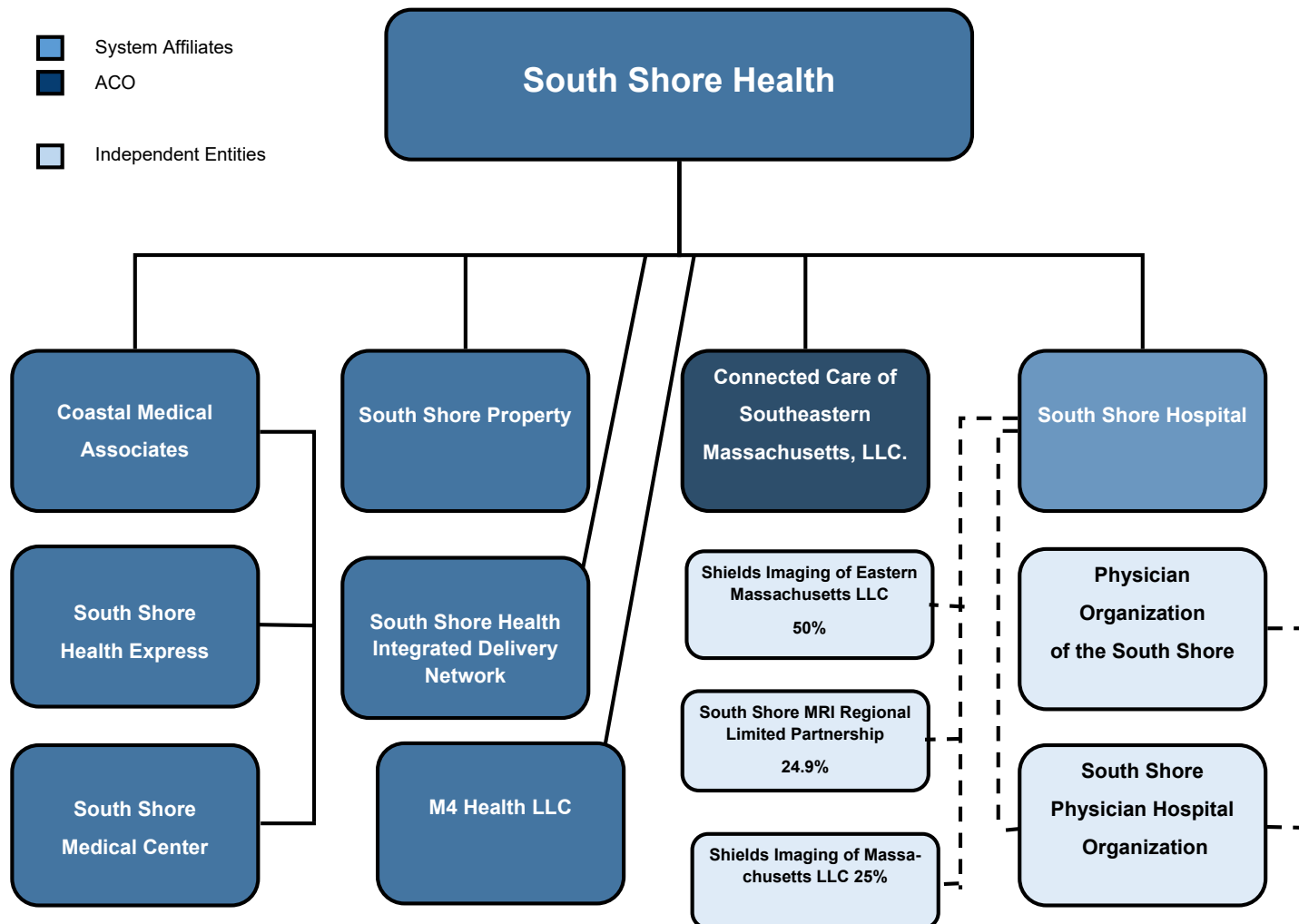
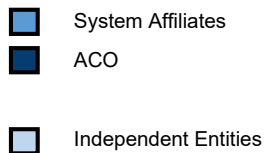
*Assets of Bridgewater Goddard Park Medical Assoc. merged into Signature Medical Group 1/1/14. It is inactive

**Assets of 110 Liberty Street Realty Company, LLC transferred to Brockton Hospital, Inc. as of 10/1/14

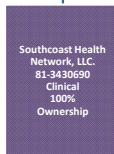
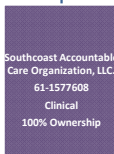
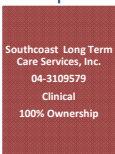
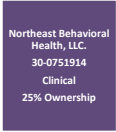
***SHC is a member of managed organization with approx. 14% ownership as of June, 2019

****No clinical services are in operation from this j/v.

South Shore Health System



Southcoast Health System



Legend

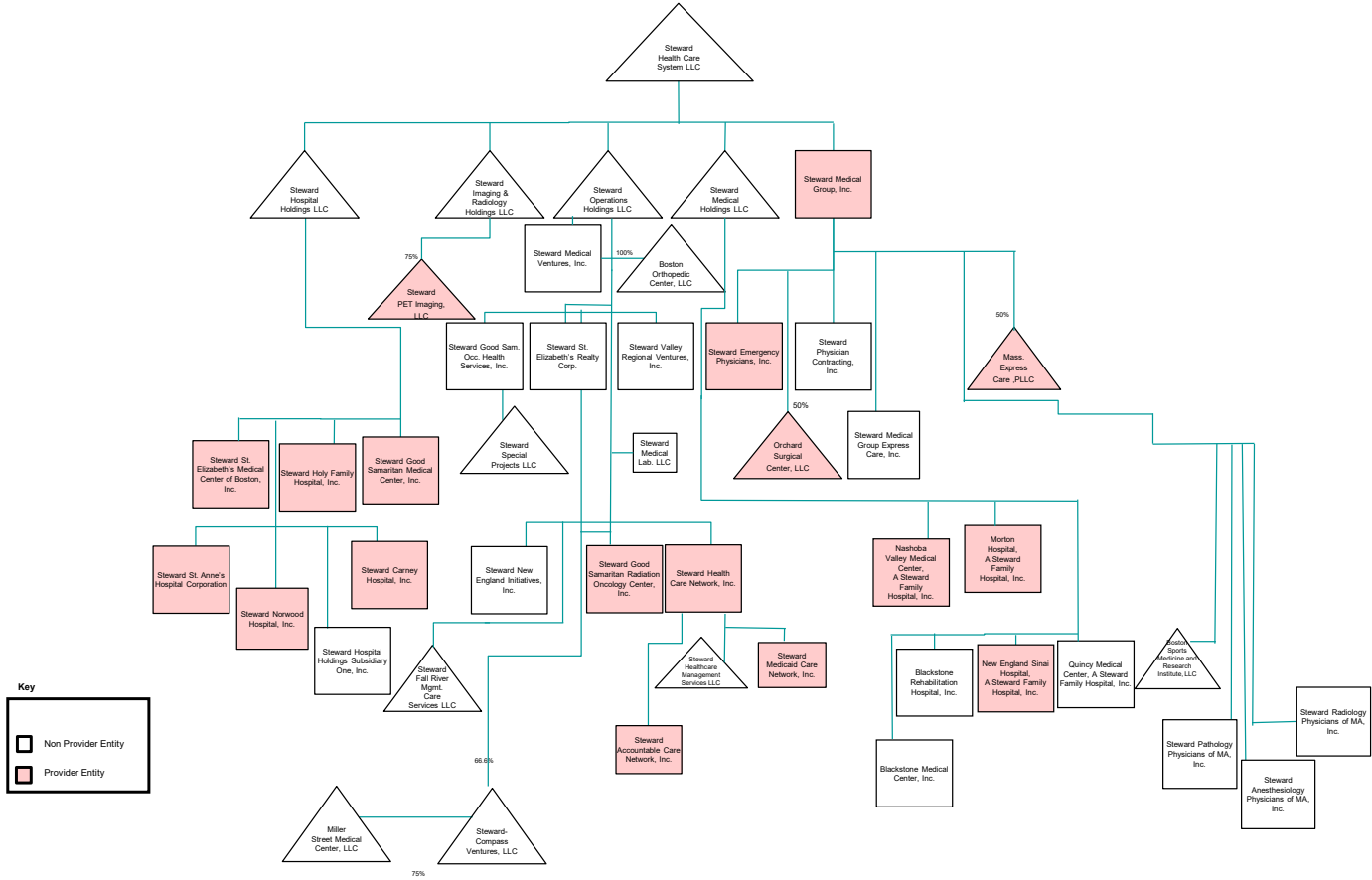
- Tax-Exempt and Not-for-Profit
- Tax-Exempt Non-Profit Stock Corporation
- For Profit - Corporation
- For Profit - Limited Liability Company
- Foreign Corp. Exempt from US Taxes until 7-20-2024
- Limited Liability Company with Non Taxable Income
- Limited Liability Company or Limited Partnership with Taxable and NonTaxable Income

Updated March 2023

Steward Health Care System

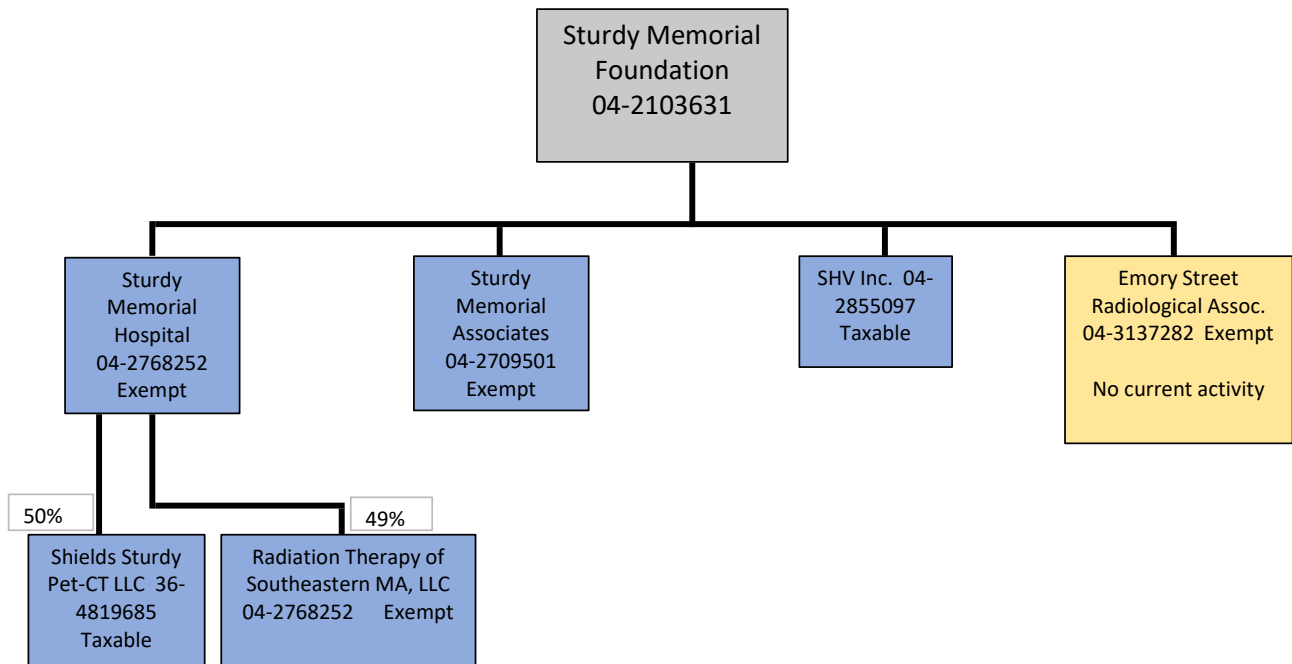
Corporate Organizational Structure
Steward Health Care System LLC

Confidential



Sturdy Memorial Foundation

Sturdy Memorial Organization Chart

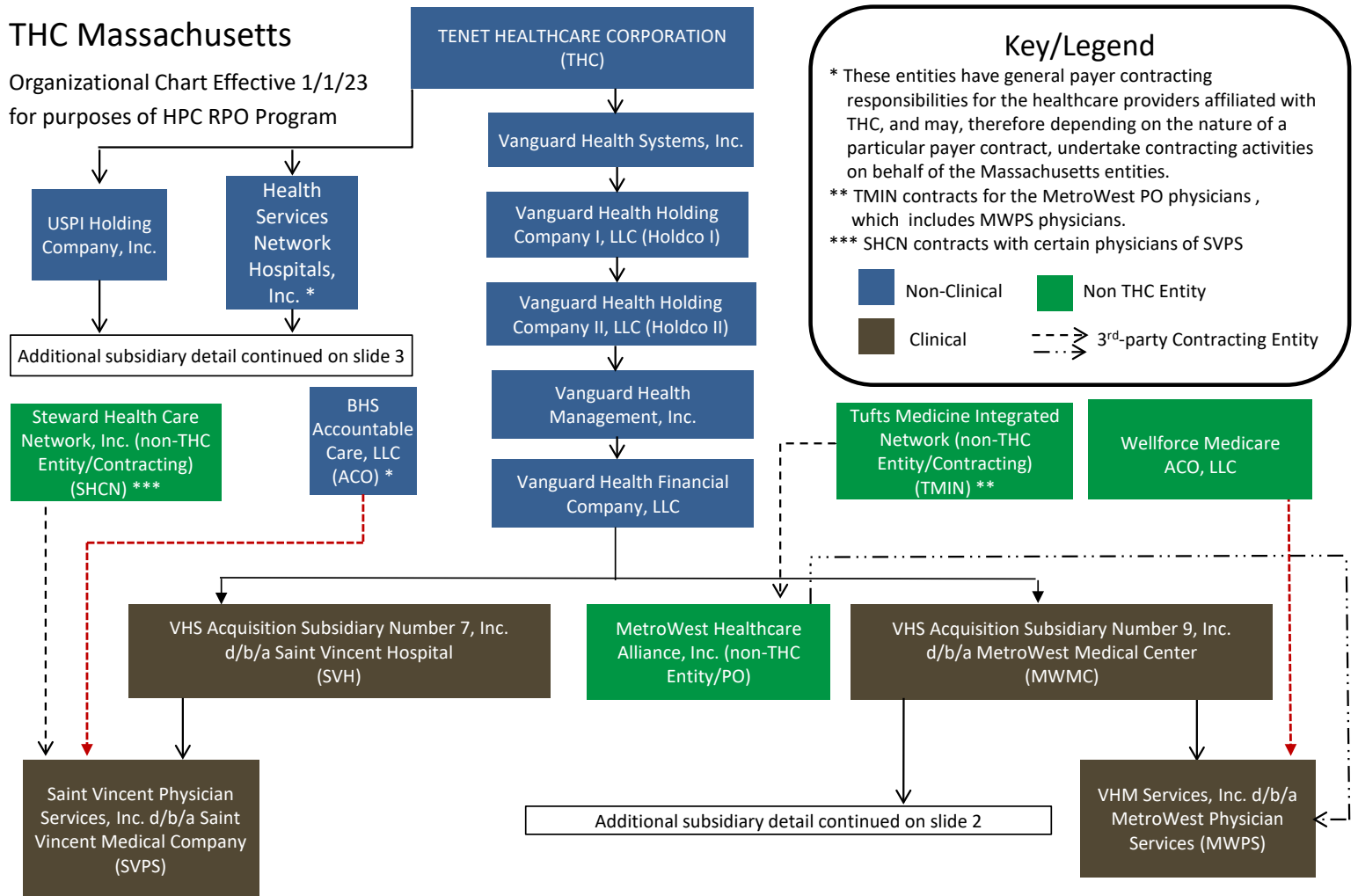


Non Patient Care
Patient Care
Currently Inactive

Tenet Healthcare Corporation

THC Massachusetts

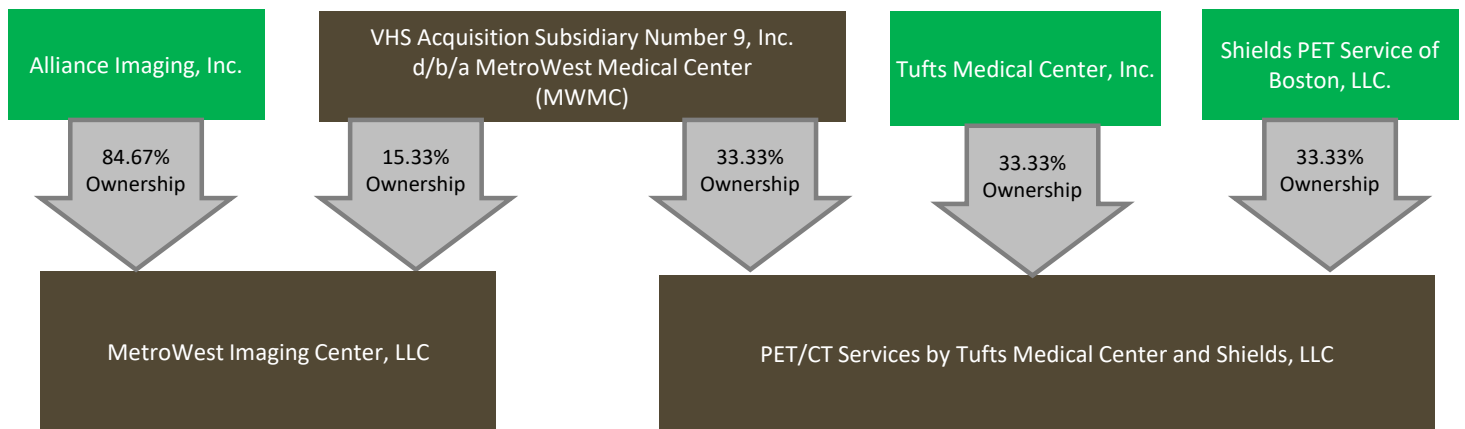
Organizational Chart Effective 1/1/23
for purposes of HPC RPO Program



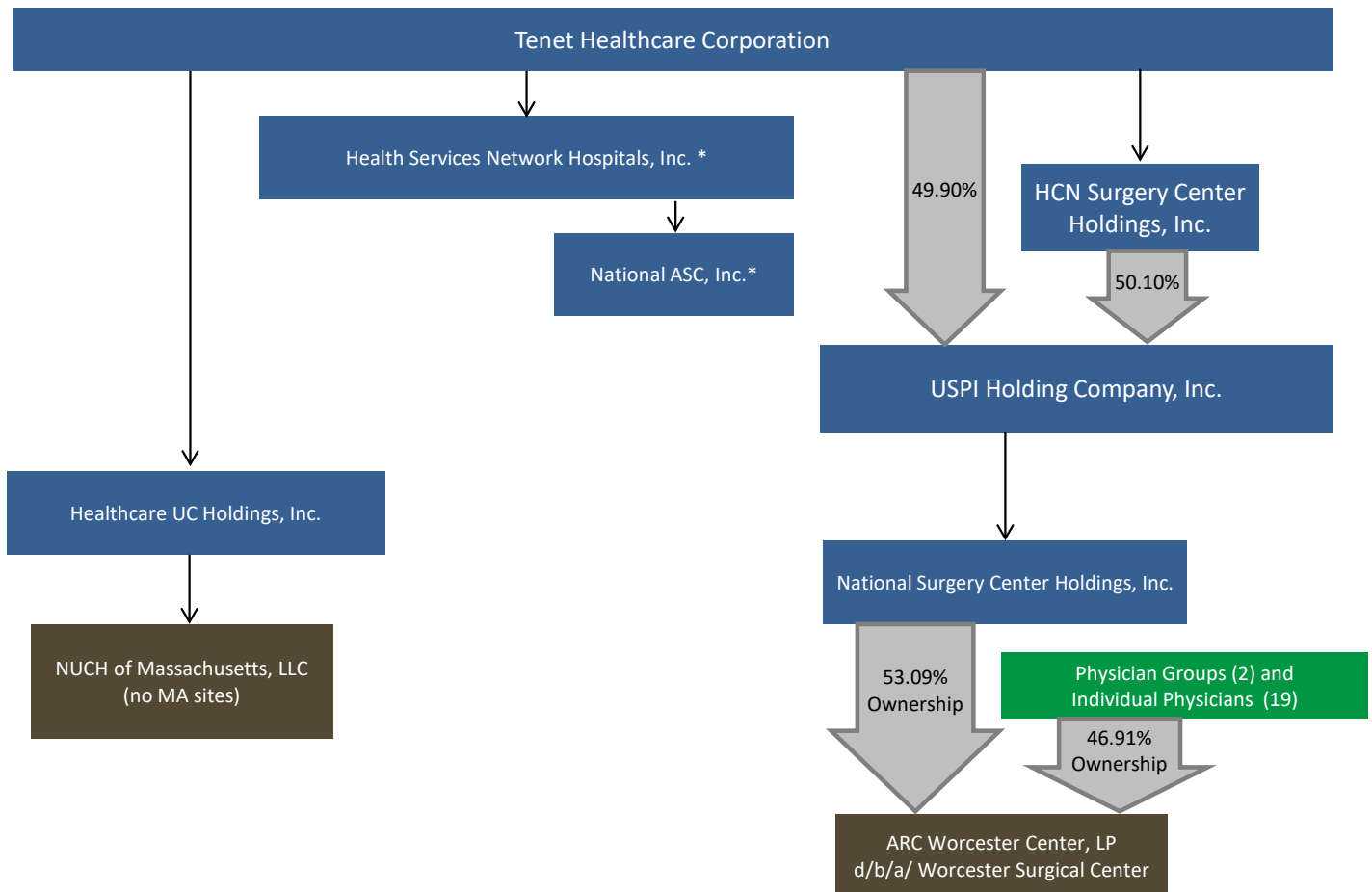
Note: The Hospitals and Physician Services entities consolidate their reporting to CHIA and the HPC for purposes of the annual cost hearings and submit the information under the name of Tenet Healthcare Northeast Region (TNR). TNR is not a legal entity but merely facilitates the submission of the information on behalf of the reporting entities.

MetroWest Medical Center Ownership Structure

Additional Subsidiary Detail continued from Page 1



Tenet Healthcare Corporation
Additional Subsidiary Detail continued from Page 1

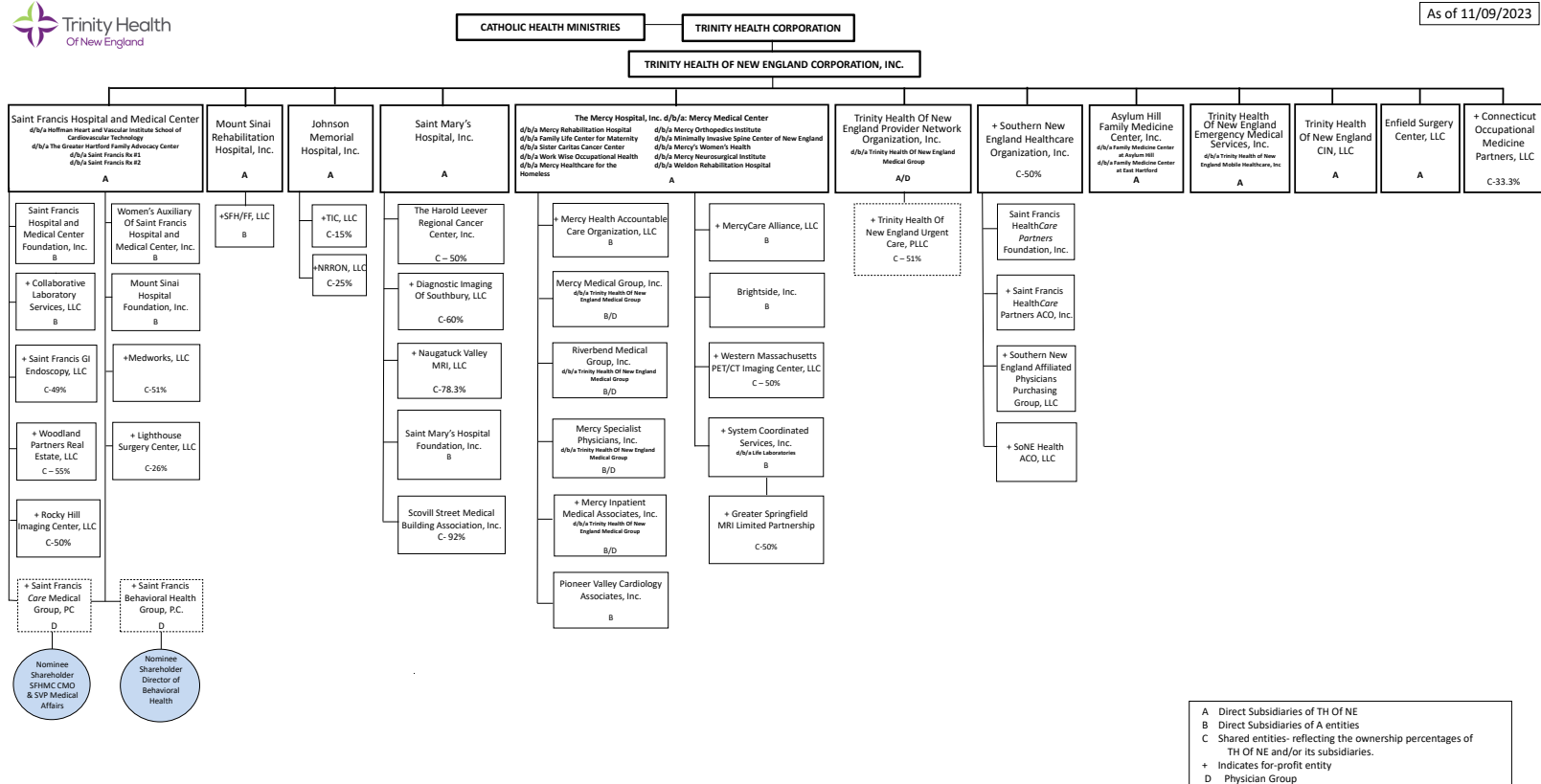


The Boston Health Care for the Homeless Program

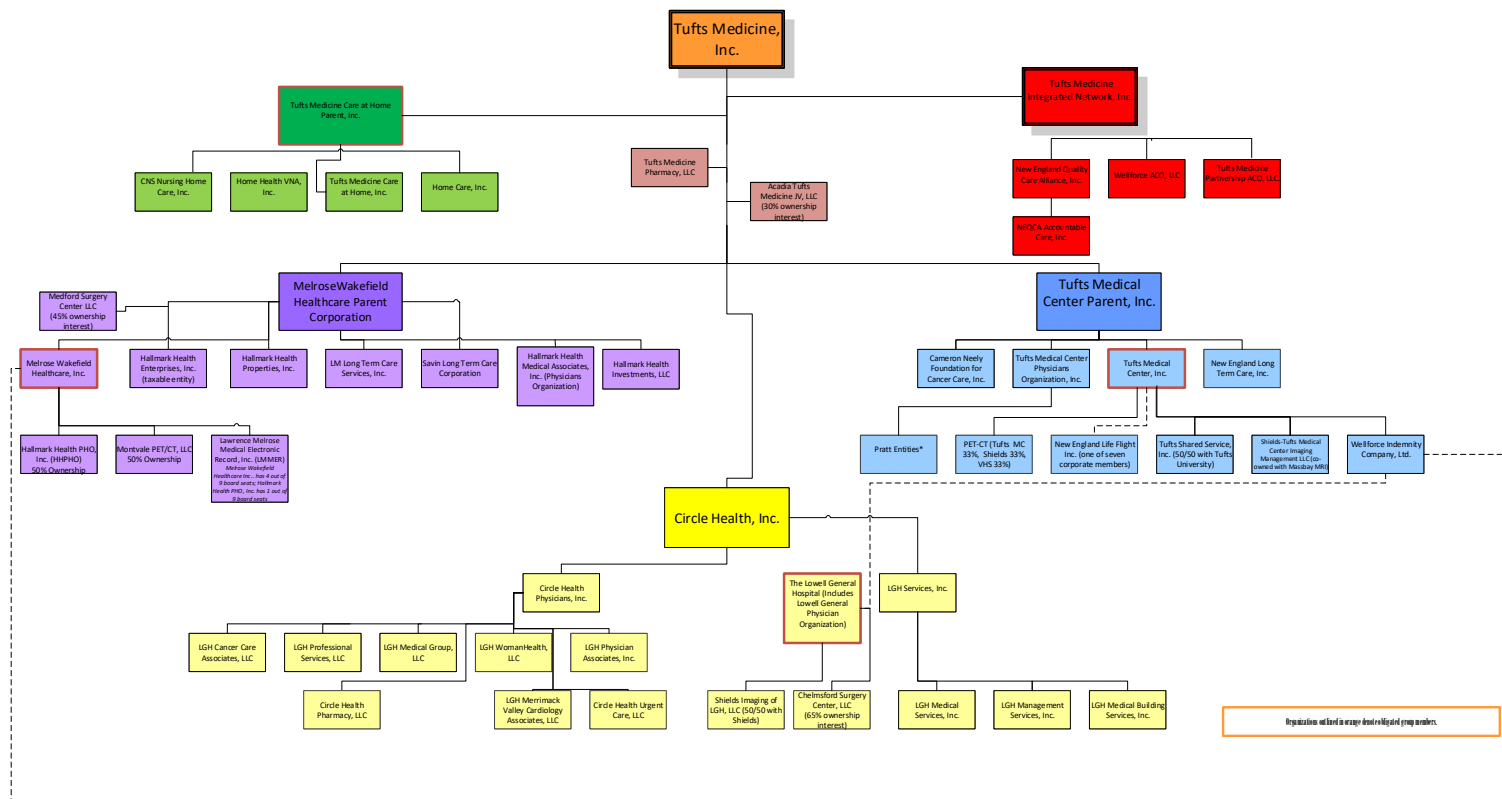
Boston Health Care for the Homeless Program
Corporate Organizational Chart

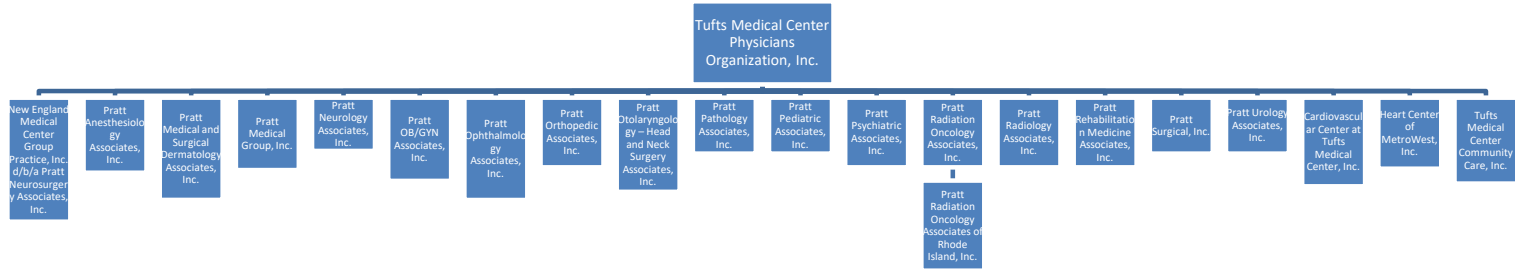
Boston Health Care for
the Homeless Program,
Inc.

Trinity Health Corporation



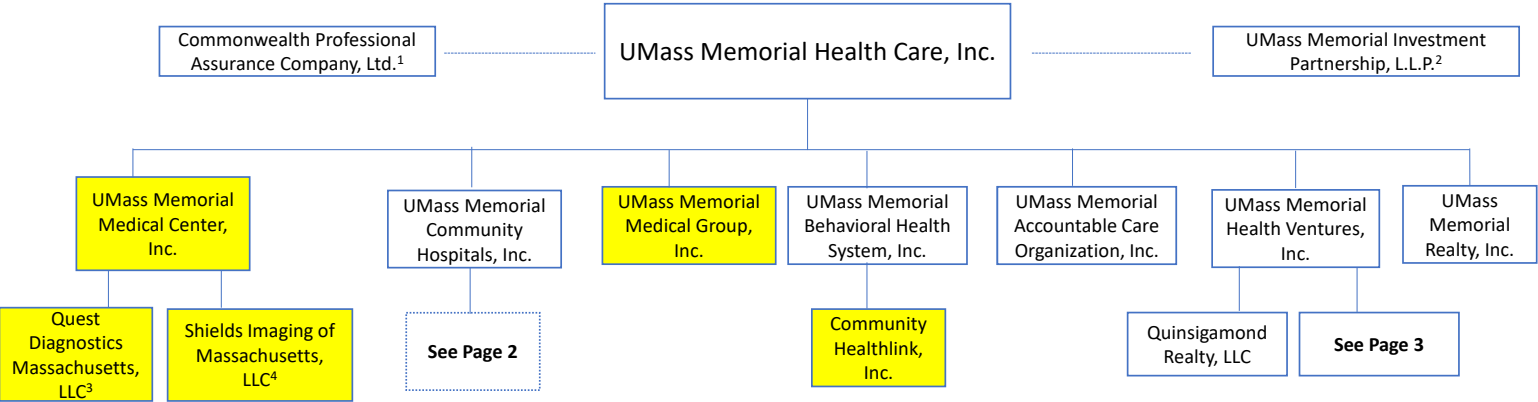
Tufts Medicine





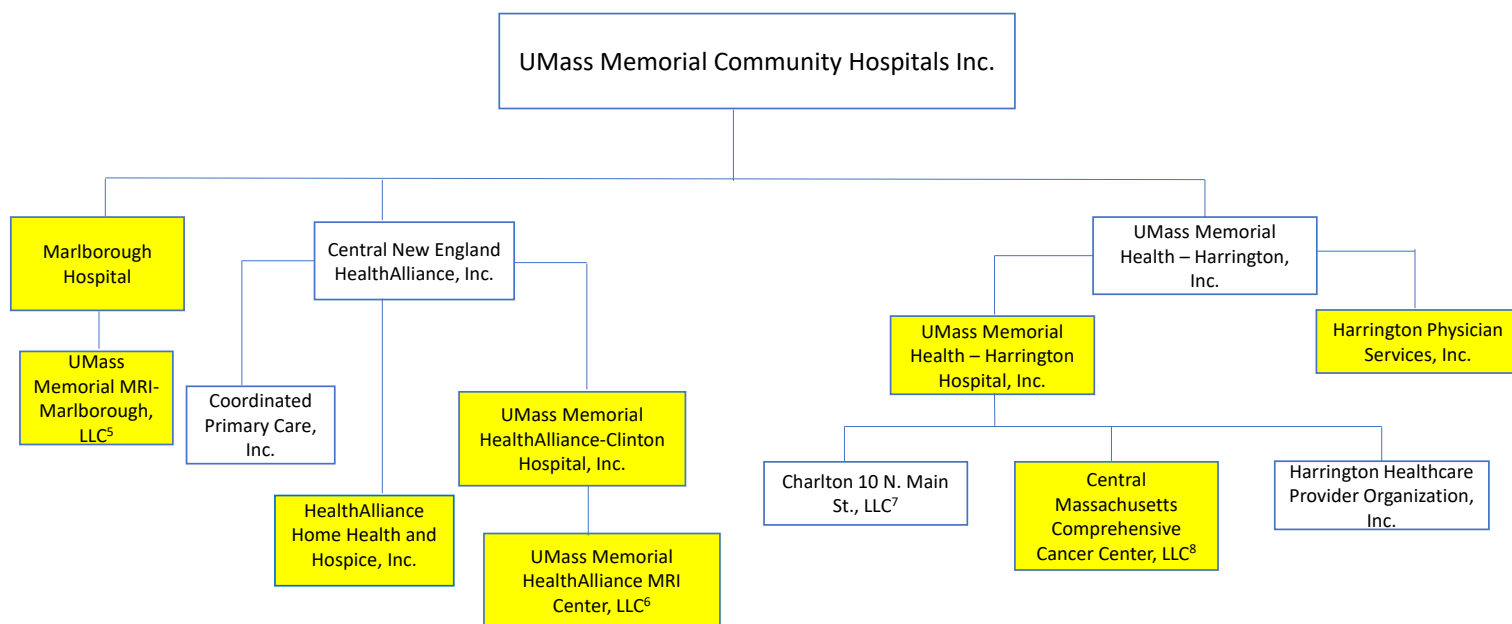
UMass Memorial Health Care

UMass Memorial Health Care and Subsidiaries



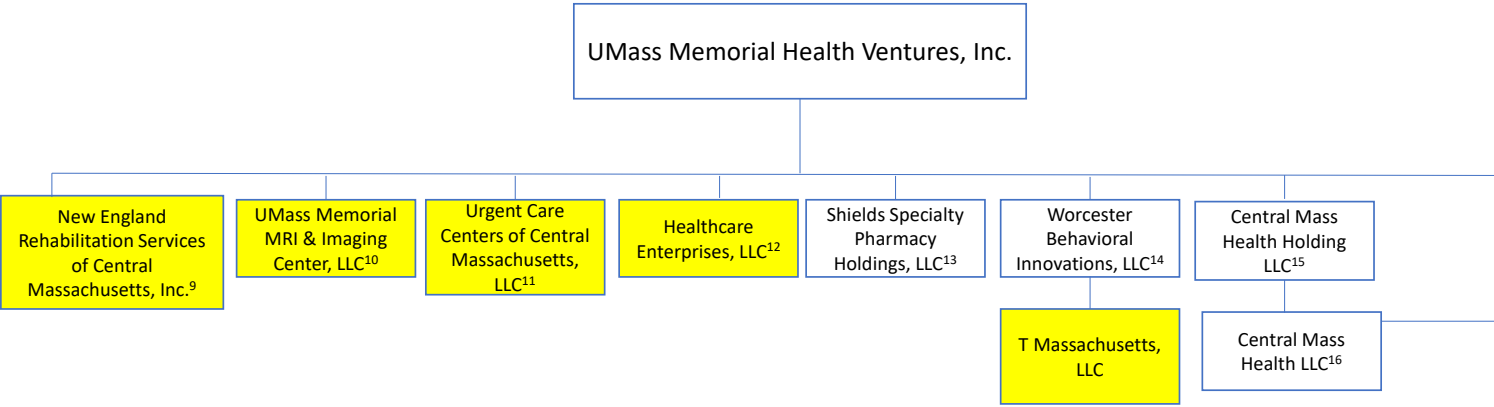
- 1. Grand Cayman, BWI Corporation; UMMHC is sole shareholder
- 2. Partnership with several system entities; UMMHC is General Partner
- 3. Joint Venture-UMMMC and Quest Diagnostics, LLC (18.9/81.1)
- 4. Joint Venture-UMMMC, Shields Imaging of NE, LLC, Baystate Radiology & Imaging, LLC and South Shore Hospital (25/25/25/25)

Indicates Clinical Entity



5. Joint Venture-Marlborough Hospital, Shields Imaging of Marlborough, UMMHV (55/40/5)
6. Joint Venture-UMass Memorial HealthAlliance-Clinton Hospital, Inc., UMMHV, Shields Healthcare of Leominster (40/20/40)
7. Joint Venture-UMass Memorial Health – Harrington Hospital, Inc., CT Compass Development, LLC (50/50)
8. Joint Venture-New England Radiation Management Services, Inc., UMass Memorial Health - Harrington Hospital, Inc., UMMHV (72.5/22.5/5)

Indicates Clinical Entity

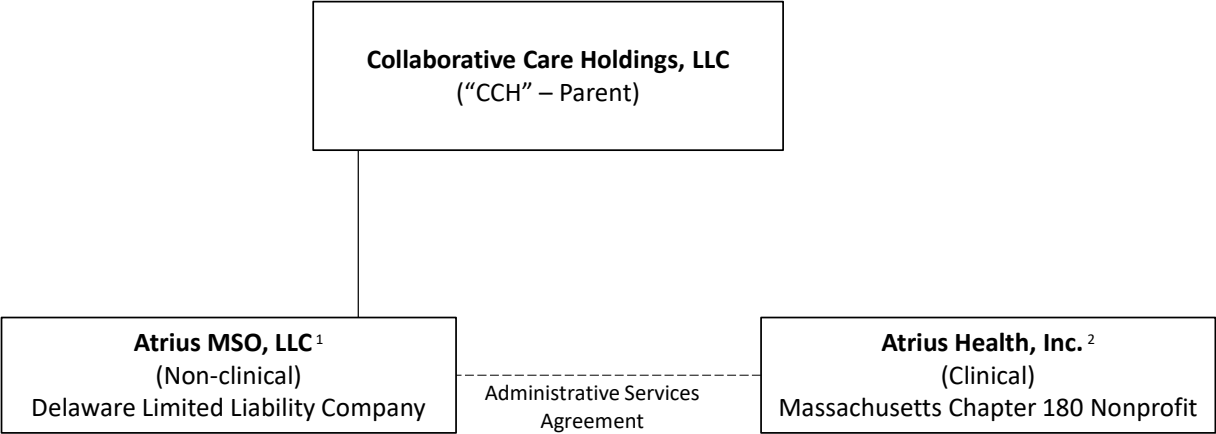


9. Joint Venture-UMMHV, New England Rehabilitation Services of Central Massachusetts, Inc. (Fairlawn Rehabilitation Hospital) (Ventures 20/Encompass Health 80)
10. Joint Venture-UMMHV, Shields Healthcare Worcester (50/50)
11. Joint Venture-UMMHV, Urgent Care Centers of New England, Inc. (49/51)
12. Joint Venture-UMMHV, Reliant Medical Group, Worcester ASC, LLC (Shields) (49/24.9/26.1)
13. Joint Venture-UMMHV, Shields Pharmacy Equity, John Shields, Incentives (43/26.35/17.48/13.17)
14. Joint Venture-UMMHV, Lola Development, LLC (33.33/66.67)
15. Joint Venture-UMMHV, Shield Managed Care Solutions, LLC, WCAS CM Holdings, LLC (33.3/33.3/33.3)
16. HMO Joint Venture - Central Mass Health Holding LLC, UMMHV (75/25)

Indicates Clinical Entity

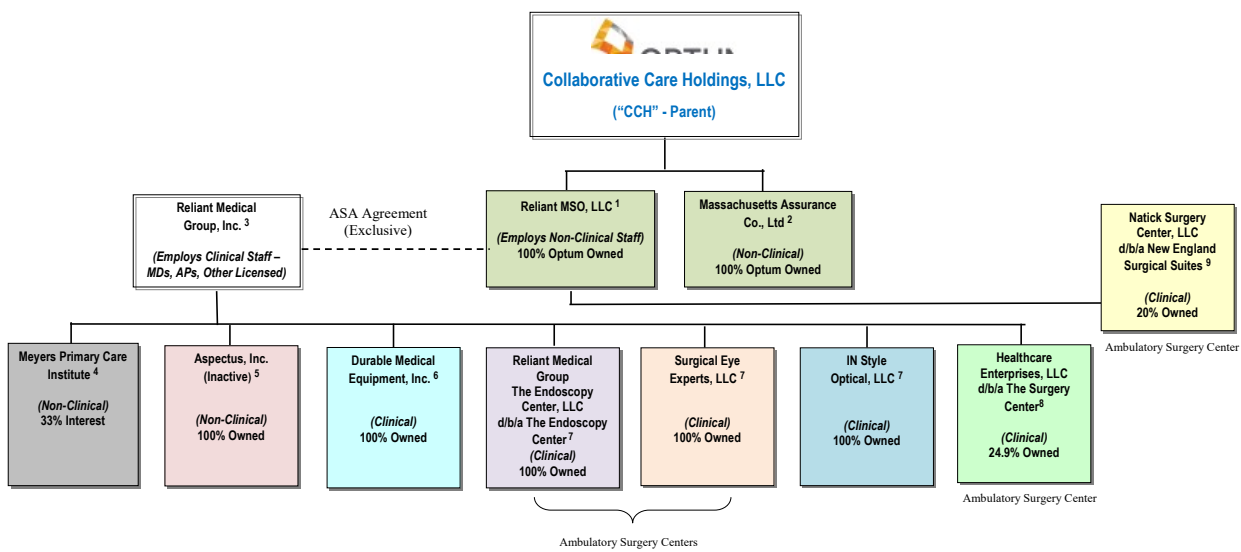
UnitedHealth Group

Atrius Health, Inc.



¹ Optum-owned Delaware single-member Limited Liability Company, CCH is sole Member
² Massachusetts taxable, not-for-profit corporation; sole member is Atrius MD; controlled by Optum through direct or indirect power to appoint a majority of the 5-member Board.

Reliant Medical Group, Inc.



¹ Optum-owned Delaware single-member Limited Liability Company; CCH is sole Member.

² Captive domiciled in the Caymans; provides PL/GL, PSL and Managed Care E&O insurance coverage for Reliant and subs.; licensed through Cayman Island Monetary Authority; CCH is parent organization.

³ Massachusetts taxable, not-for-profit corporation; sole member is a Reliant MD; controlled by Optum through direct or indirect power to appoint a majority of the 5-member Board.

⁴ Joint endeavor of the University of Massachusetts Medical School, Reliant Medical Group, and Fallon Community Health Plan; conducts population-based research to inform policy and practice, promoting evidence-based care.

⁵ For-profit Massachusetts corporation; no business currently being conducted through the entity, although we continue to file taxes.

⁶ Massachusetts taxable, not-for-profit corporation; provides medical equipment and supplies.

⁷ Single-member Massachusetts Limited Liability Companies.

- "Disregarded entities" for IRS purposes

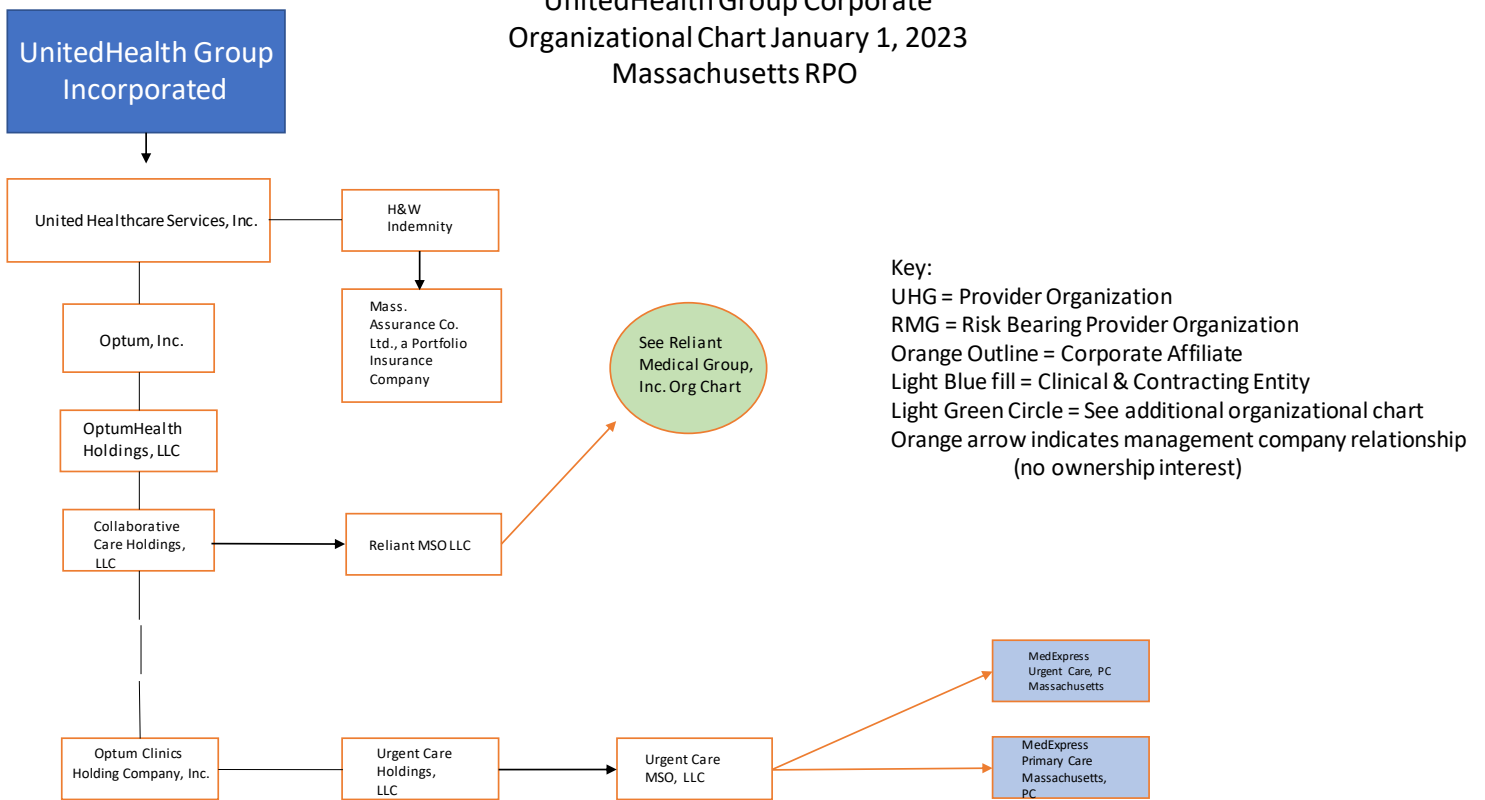
- Responsible for sales tax

- Roll up under Reliant Medical Group

⁸ Multi-member Massachusetts Limited Liability Company; joint endeavor of Reliant Medical Group, Inc., UMass Memorial Health Ventures, Inc. and Worcester ASC, LLC

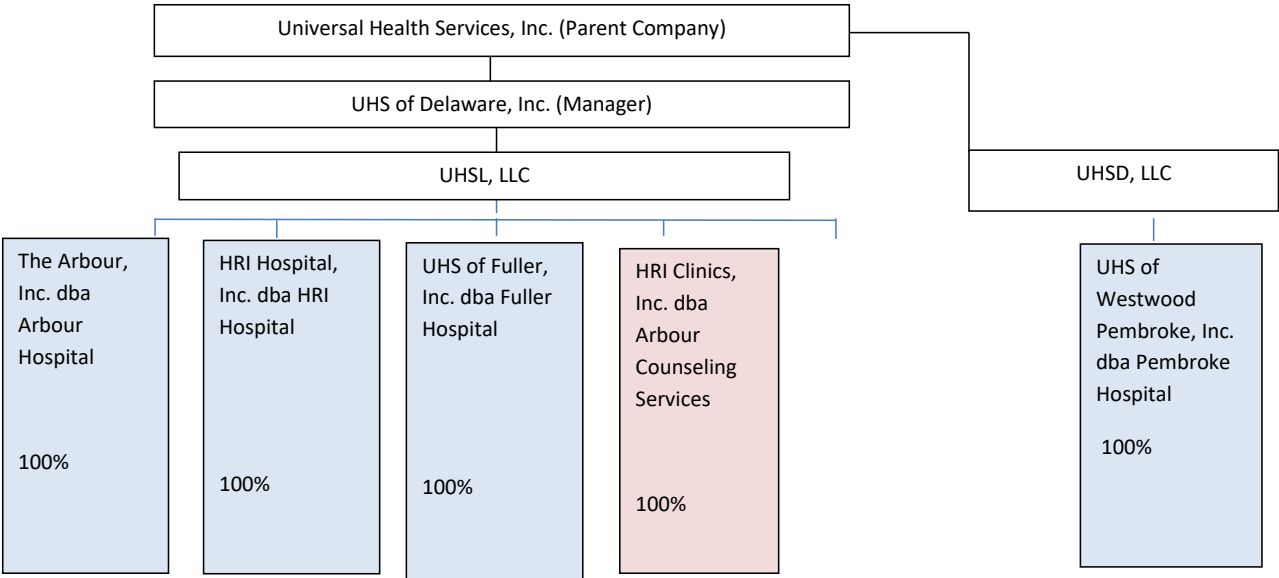
⁹ Multi-member Massachusetts Limited Liability Company; joint endeavor of ASC HoldCo, LLC, Reliant MSO, LLC and Shields ASC, LLC

UnitedHealth Group Corporate Organizational Chart January 1, 2023 Massachusetts RPO



Universal Health Services

Organization Chart of Organization Affiliations 2022



-

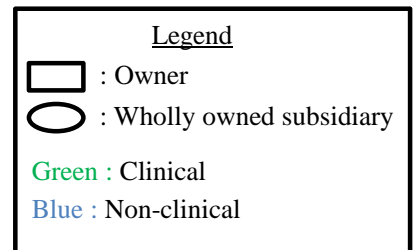
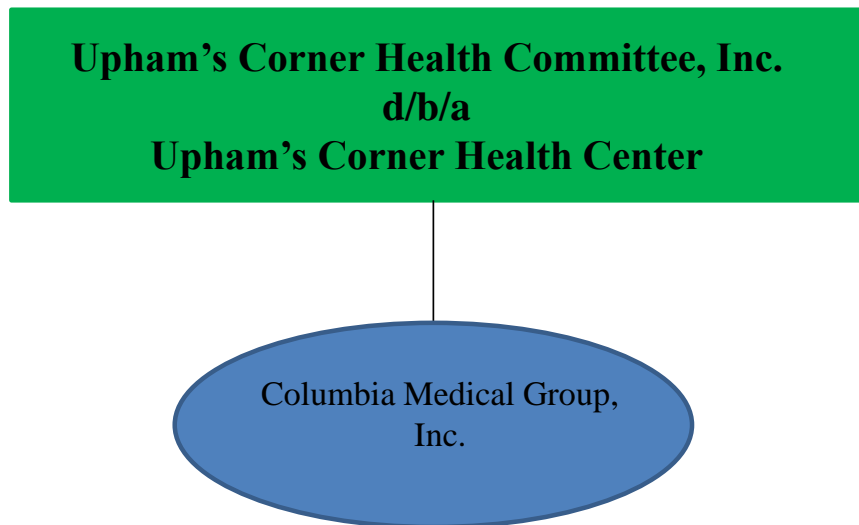
Key: POs represented are wholly owned subsidiaries of applicable parent

Blue: Psychiatric Hospitals

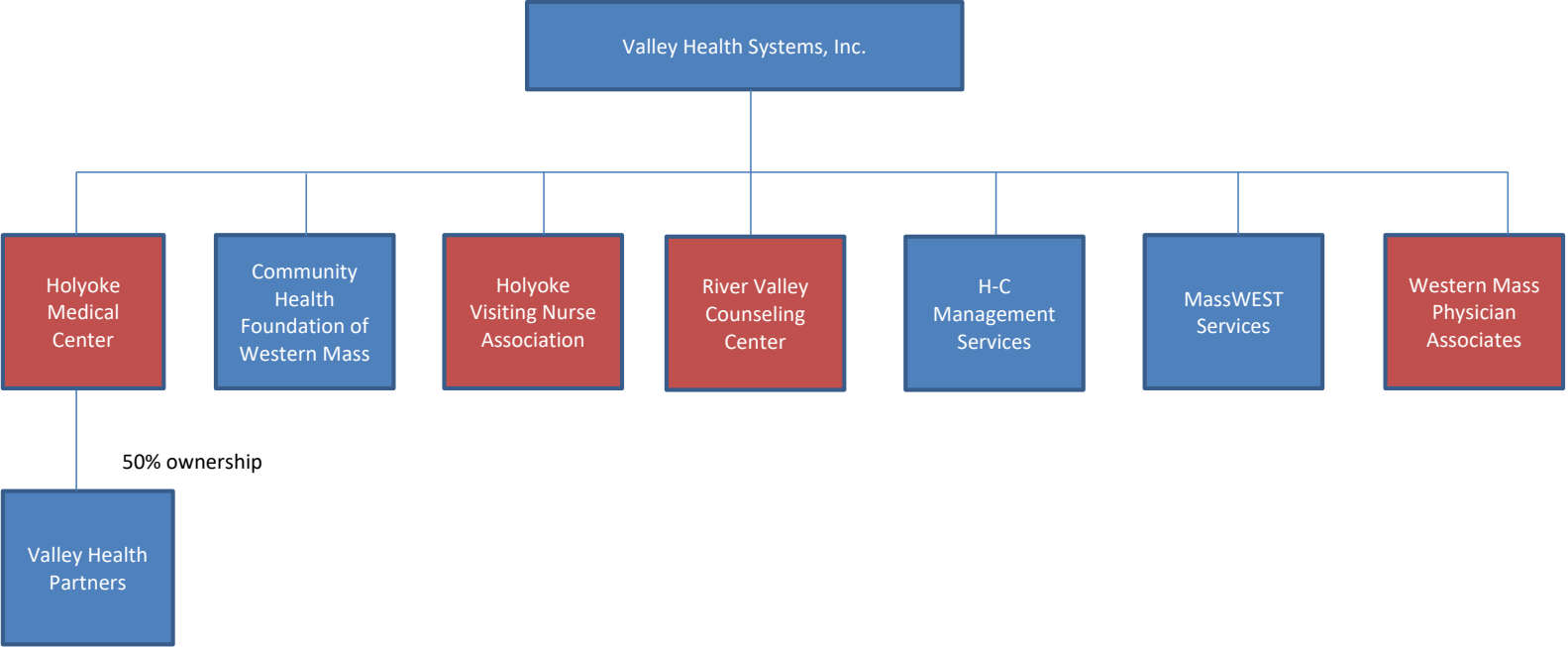
Red: Outpatient Mental Health Clinics


Upham's Corner Health Committee

Corporate Organizational Chart



Valley Health Systems



 = Clinical Entity

Valley Medical Group

Valley Medical Group, P.C.
Corporate Organizational Chart
12/11/2014

